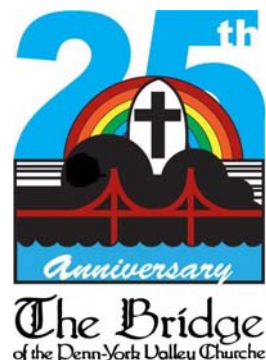


annual report

2012



The Bridge of the Penn-York Valley Churches

February 2013

P.O. Box 202
Sayre, PA 18840
570-888-8826

www.thevalleybridge.org

contents

President	3
Secretary	4
Corresponding Secretary	4
Clearinghouse	5
Voucher Writer Training	5
Catastrophic Assistance	6
Clothes Closet	7
Helping Hands	8
Kids at Risk	9
Community Dinners	10
Mobile Food Pantry	11
Valley Food Pantry.....	12
Financial Report	13-17
Audit Committee	18
2012 Leadership Team.....	18

*P.O. Box 202, Sayre, PA 18840
www.thevalleybridge.org
570-888-8826*



President

We would love to take this space to personally thank, by name, the many volunteers who gave so selflessly of their time and energy to The Bridge in 2012. But we would surely forget someone (or multiple someones) because there are so many to thank, so we will have to settle for a general thank-you to all you Bridge volunteers...
THANK YOU!

This year marked the 25th year of our existence. We were able to take time to reflect and celebrate on Saturday, May 5, 2013 at the Athens Wesleyan Church. Several area businesses gave generously to support the gathering.

2012 was also a year of settling, of consolidating gains. Our Clothes Closet facility now has greatly improved ramp/ stairway entrances. Our furniture warehouse keeps looking nicer on the inside thanks to the Mighty Men of Valor, Charlie Hammond and his staff. Larry Day has settled in extremely well as Clearinghouse Coordinator. Our first-ever entrance into the world of the Athens ArtsFest went well and will be expanded upon in 2013. Joe and Jennifer Joyce stepped up their involvement in the Sleepout and set a lofty goal of raising \$25,000.

Our voucher assistance program (non- flood relief) continued to run at a pace that resulted in another \$100,000+ year. But, - surprising to all of us we think, - income ran neck-and-neck with expenditures; and in spite of dancing close to the red line we never had to stop issuing vouchers (praise God!). Especially gratifying, has been the support of the community and our member churches; no sooner had we made the need known, then the resources needed to continue, were there.



In past years, we have debated endlessly over whether to try to do something about transient housing/ emergency homeless sheltering. In 2013, we are going to take some baby steps. Nothing concrete, but we will hear from a range of experiences at our monthly board meetings and maybe try to build or be a part of a coalition of groups that COULD do something. Perhaps then at least to be able to settle on, "what it is exactly that is needed".

We reluctantly note the departure into retirement of several dearly beloved pastors, long-time partners of The Bridge in doing God's work; but The Bridge soldiers on and we will build connections with the new faces until one day they will be dearly beloved long-time partners too.

THANK YOU PEG MOTT

There are not adequate words to express our debt of gratitude to Peg Mott for her almost 10 years of dedicated service to The Bridge and it's voucher writers. Thank you, Peg, and we sincerely apologize for what we put you through in having to issue almost 800 flood-relief vouchers in just 2 months.

In service to Christ and His body,

Dick Friend *Bobette Friend*

Dick Friend & Bobette Friend





Secretary

As secretary for the Bridge for the second year, I have continued to feel honored to be asked to assist the Bridge in this position. Many challenges were faced this year and many people have been helped. One of the highlights of the year was our 25th year celebration held in May and as the secretary I was privileged to participate in the organization of this event.

Access databases were maintained by the secretary. These held the Church membership information which included addresses, e-mail addresses, phone numbers and other information needed to communicate with the churches and church representatives. An e-mail address book listing the board members, voucher writers, pastors and officers was maintained by the secretary. Part of the secretarial responsibility was notifying members of the outcome of the monthly board meetings. The secretary also handled the yearly update of the membership renewals.



New members joined The Bridge during the year, each bringing new ideas, experiences, etc. needed to complete the fellowship of The Bridge. These members have been welcomed, along with their ideas and the strong desire to minister in the name of Jesus.

I would like to say thank you for allowing me to serve in this capacity for the year 2012. I plan on continuing to serve as secretary again this year, in various ministries within The Bridge and as a church representative.

Respectfully,
Kay Daniels, Bridge Secretary

Corresponding Secretary

As Corresponding Secretary for The Bridge, it is my responsibility to send:

1. Thank-You letters to donors for The Bridge
2. Notification to family or friends of gifts given in honor or memory of someone.
3. An occasional greeting card to members of our board at times of severe crisis or life celebration.

The total amount of correspondence sent for 2012 was 352.

I need to acknowledge the help of my husband, Nelson, who sends and receives emailed data and prints the letters to be sent. Part of our gift to The Bridge is providing all the envelopes, paper, printing and postage that enable this task to be accomplished.

Thank You,
Sue Kopatz, Corresponding Secretary





Clearinghouse

The Clearinghouse responds to general inquiries about the Bridge and its functions as well as directing clients seeking financial assistance or furniture to a local pastor or church to complete an application and receive a Bridge voucher if they are eligible. Family income, number of people in the household, household expenses, frequency of requests and residence (Sayre, Athens or Waverly school district) determine eligibility. Vouchers are mainly used for rent/security deposit, utility shutoff, furniture and other emergency situations.

2012 Vouchers

Voucher Type	Number
Electric	88
Fuel oil	61
Gasoline	8
Kerosene	1
Lodging	7
Miscellaneous	18
Propane	9
Rent	95
Security Deposit	61
Sewer	6
Natural Gas	44
Water	22
Total	421

Voucher Type	Number
Furniture	211
Flood	12
Catastrophic	2

Clearinghouse Hours

Monday 9 am – 12:30 pm
Tuesday 9 am – 12:30 pm
Wednesday 9 am – 12:30 pm
Thursday 9 am – 11:30 am

(570) 888-8826

clearinghouse@thevalleybridge

Respectfully submitted,

Larry Day, Clearinghouse Coordinator



Voucher Writer Training

The Bridge is dependent on voucher writers in our member churches to interview people requesting assistance. 421 people were interviewed for cash assistance vouchers and 211 for furniture vouchers in 2012.

Without trained voucher writers we would not have been able to assist these individuals and families.

Voucher writing training was provided to 7 individuals in 2012. This was needed as we lost several individuals who had served as voucher writers in the past. We are grateful for these new people and are thankful for the service of those who have and continue to serve the people of our community in this way.

We are always willing to train more pastors and others to write vouchers. Interested individuals should contact the Bridge Clearinghouse at (570) 888-8826.

Respectfully submitted,

Larry Day, Voucher Writer Trainer



Catastrophic Assistance

For our purposes, a catastrophic event is defined as "as a natural disaster (e.g., flood, winter storm, tornado, earthquake, mudslide, wildfire), house fire, chemical emergency, or abusive situation resulting in having to leave a residence without belongings."

In 2012, we had the opportunity to assist additional households affected by the flooding of September 2011. First, we had an additional 5 households who did not receive the "second round" distribution provided to flood survivors in December 2011 who we were able to assist by giving \$450 to each and 2 households which had not received any flood assistance who we were able to give \$800. In order to distribute the remaining funds designated for the flood with the most impact, a Special Flood-Relief Matching Grant of up to \$1,000 each was established. In September, we were able to award five \$1,000 grants with matching labor. In December, an additional \$12,300 was awarded to Susquehanna Conference of the United Methodist Church to finish 12 homes of flood survivors.

In addition to flood assistance, we were able to assist 2 families with house fires, one in January with \$1,100 toward alternative housing and one in July for \$750 for electrical work.

We are thankful for the opportunities we had this year to serve those in our community.

Respectfully Submitted,

Kim Paul
Catastrophic Coordinator



Clothes Closet

The Clothes Closet is a ministry of The Bridge located at the North Waverly Chapel which provides clothing and apparel, small household items, and toys to those in need without requiring a voucher and with no geographical restrictions. Individuals and families find out about the ministry through voucher writers, churches, friends, medical personnel, and the media. The ministry relies entirely upon donations from generous individuals and sometimes businesses in the community.

This year we continued our regular ministry operating out of the modular at the North Waverly Chapel. We

were opened twice a week, Tuesdays from 6:30 pm to 8:30 pm and Wednesdays from 12 noon to 2 pm serving those in need. We also continued our ministry to flood survivors using the entire gym of the North Waverly Chapel being open 6 days a week through March. We did not count items distributed to flood survivors, only our regular clients. Starting in April, we served flood survivors through our regular ministry. We had 2,176 household contacts and distributed 22,999 items (through the regular ministry and many, many times that to flood survivors).



Gym at North Waverly Chapel for Flood Survivors

As always, we are very thankful for all those who so generously donated items and for the numerous volunteers who make this ministry possible. I especially want to thank the 2 people who served above and beyond this year: Marilyn Weber and Sue Walton. I really don't know what we would have done without them.

I would also be remiss if I did not publically acknowledge the faithful contribution of Dick Johnston who takes care of the items we cannot use a couple times a week and takes our cardboard to be recycled (though Marilyn has shared this responsibility this year as it sometimes required several trips a week!) and Linda Waterman who does our data entry which has been a larger task than usual this year! A huge THANK YOU to all the volunteers who faithfully serve the Lord by helping those in need!

Further, we are also thankful for completion of the steps on the east side of the building by Daryl Wandell. What an improvement and great job!



We look forward to what the Lord has in store for the ministry in the future.

Respectfully Submitted,
Kim Paul, Clothes Closet Co-Coordinator

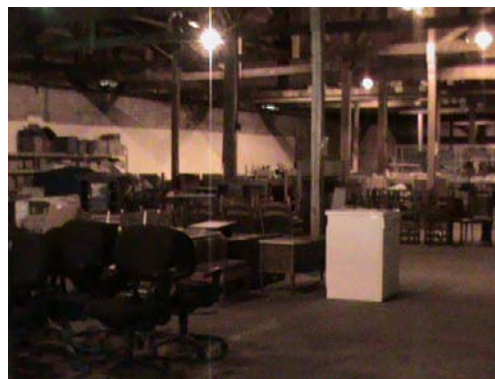


Helping Hands

The year of 2012 has been quite a busy year for the "Helping Hands" Used Furniture Ministry operating out of our large warehouse facility situated on the Broad Street Extension in Waverly near Hagen Pet Foods.

The Furniture Ministry showed an increase of 50% in the number of vouchers and donations over the year of 2011.

The activity was also increased because many FEMA flood clients had to make repeated calls to find the availability of furniture and household items to fill their many needs.



We were fortunate to receive donations of many household furniture items and office equipment from Chesapeake Energy and NOMAC.

The office equipment was beneficial to the Valley community, especially to flooded Athens businesses.

Our open hours of operation are:

Wednesdays: 9am to 12noon

Saturdays: 9am to 12noon

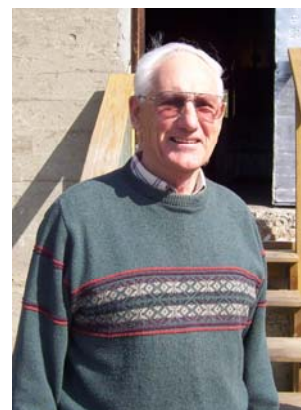
Thanks to our great staff of volunteers: John Simonds, Bob Ward, Howard Brewster, Charlie

Brown, Jeff Northrup, George Crowell, Marilyn Weber, and Sue Walton.

2012 Helping Hands Used Furniture Activity

Vouchers:	484
Donations:	457
Total:	941

Respectfully Submitted,
Charles L. Hammond



Kids at Risk

In 1994 the Kids at Risk ministry was started to meet the needs of children in the Sayre, Athens, and Waverly school districts. Children in uncomfortable or unhealthy situations that risk failure in school and possibly later in life from the lack of hygiene supplies, inadequate clothing and or school supplies are helped with this ministry.

In 2012 Kids at Risk helped 871 students. The counselors, school nurses, teachers and secretary's help make this program work. They take the time to evaluate a child's needs and then e-mail me with those needs. I check supplies on hand to see if I have those items, if not I purchase them.

Individuals, groups and churches in the community support Kids at Risk. 100% of the donations go back into this ministry.

The beginning balance in Jan. 2012 was \$6,410.32. The ending balance was \$6,819.34. Income was \$2,291.00. We spent \$1,879.98. The bank went paperless and charged \$2.00.

Spalding Memorial Library sponsored the Angel Tree book program again this year. This program offers books to children at Christmas that may never receive a gift. A total of 297 books were wrapped this year. Since December 2005, a total of 2,374 books have been delivered to children.

I would like to thank God for helping me serve this ministry.

Respectfully Submitted,

Sherry Gabauer
Kids at Risk Coordinator

Mission: We will help children, grades K-12, through the schools in the Athens, Sayre and Waverly school districts, attempting to meet the need which can not be met in any other way. We will make every effort to preserve the self-esteem of the child and family as we reach out in the name of Jesus Christ.





Community Dinners

The Free Community Dinner program provides a healthy meal and Christian fellowship each Thursday on a rotating basis at Valley churches.

Normally The Bridge provides 4 dinners; this year we prepared and served 2 dinners (Waverly Methodist in April and Saint James Catholic Church in Nov.) We supplied servers and dessert for The Church of the Redeemer in February. As in the past, the Church of the Redeemer waived the cost of the dinner - this is really appreciated. Because of a conflict we did not prepare a dinner at the Athens Methodist but we will be back on board next July.



Presently dinners are served from 4:30-6 PM at the Waverly Methodist (1st week), Athens Methodist (2nd week), and Saint James (3rd week). Dinners are served from 4-6 PM at The Church of the Redeemer and the Waverly Presbyterian Church.

There is no cost for the dinner but donations are accepted. These donations are left with the host church to help defray their expenses.

Respectfully submitted:

Sandy Campbell
Community Dinner Co-Coordinator





Mobile Food Pantry

The Bridge has continued to sponsor the Mobile Food Pantry each month on the third Wednesday from 1:00p – 2:00p at the Waverly Presbyterian Church throughout 2012. The Bridge provides an average of 20 volunteers for each distribution. Volunteers come from a variety of sources within the Bridge as well as a significant number of local homeschool families part of the Valley Area LEAH, a Christian homeschool group.

There are a variety of jobs including directing traffic, signing in people, directing people, stocking the tables, bagging produce, handing out food, and helping people carry food to their vehicles. Many of the volunteers are

“repeaters” meaning they come every month which is a huge blessing and shows what a blessing it is for the volunteers as well. Like most of the ministries of The Bridge, it wouldn’t be possible without dedicated volunteers!



We are especially grateful for the graciousness and hospitality of the Waverly Presbyterian Church for allowing the distributions to take place on their property and for allowing us to use the social hall and facilities. They have even allowed their kitchen facilities to be used for food demonstrations for clients. What a blessing!

In 2012, the 12 food distributions averaged about 175 households served each month.

It has been a privilege to serve God and the people in this community through the ministry of the Mobile Food Pantry in 2012.

Respectfully Submitted,

Kim Paul
Mobile Food Pantry Co-Coordinator
Waverly Site



Waverly Food Pantry

Director: Liz Coco

Assistant: Howard Brewster

In 2012, the number of people helped at the Waverly Food Pantry showed a marked increase of 33% compared to the year 2011.

2012 Activity Record

2012	PA	NY	TOTAL
Households	789	601	1,390
Adults	1,449	1110	2,559
Children	728	523	1,251
Total	2,177	1,633	3,810

Valley Food Pantry Hours

Monday – Thursday 10:00 am – 12 noon
 2:00 pm – 4:00 pm

Friday 10:00 am - 12 noon

Closed 3rd Wednesday morning (Mobile Food Pantry)

Located at 418 Waverly Street, Waverly, NY

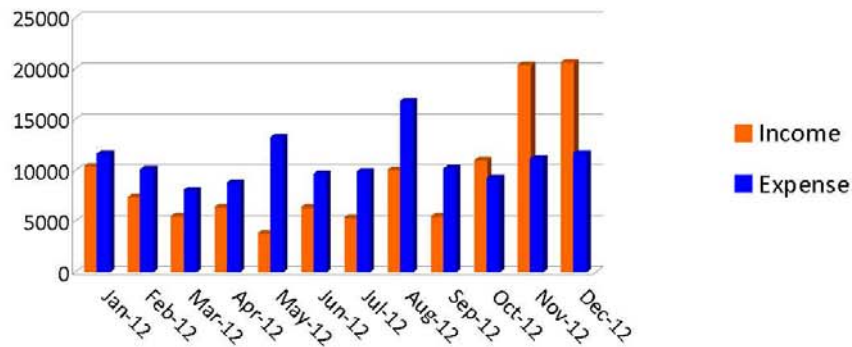
Phone: 607-565-8718

Respectfully Submitted,

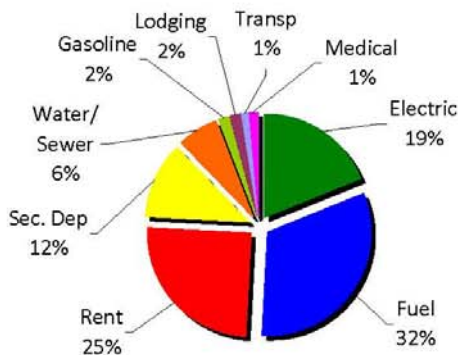
Charles Hammond for Liz Coco

The Bridge of the Penn-York Valley Churches 2012 Treasurer's Annual Report

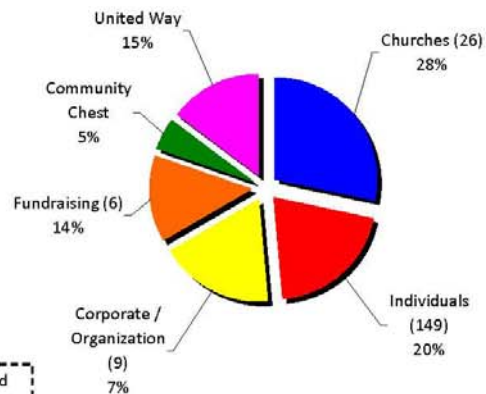
2012 Income and Expenses (w/o Flood Relief Funds)



Types of Vouchers Paid



Funding Sources



Without Flood Relief Funds.

Account	Beginning Balance	Income	Expense	Ending Balance
Bridge Account <u>with</u> Flood Relief	\$ 88,678.86	\$ 119,415.08	\$ (166,666.08)	\$ 41,427.86

Designated Funds within Bridge Account

Flood Relief	\$ 33,416.40	\$ 7,026.00	\$ (36,623.25)	\$ 3,819.15
Total Undesignated Funds	\$ 55,262.46	\$ 112,389.08	\$ (130,042.83)	\$ 37,608.71

Income and Expense Comparison 2011-2012 (w/o flood funds and with pass thru funds KAR, V Food Pantry & Shell Oil)			
	1/1/2011-12/31/2011	1/1/2012-12/31/2012	Difference
Income	\$77,374.73	\$112,389.08	\$35,014.35
Expense	\$105,932.07	\$130,042.83	\$24,110.76
Difference	(\$28,557.34)	(\$17,653.75)	\$10,903.59

Historical look at voucher levels: Previously-\$100; May 2009-\$150; May 2010-\$200; May 2011-\$300

The Bridge of the Penn-York Valley Churches
Income / Expense Comparison 2011-2012 (without Flood Relief Funds) Page 1

INCOME	2011	2012	Difference
Churches			
Athens			
Presbyterian	\$ 500.00	\$ 2,474.72	\$ 1,974.72
UMC	\$ 3,727.90	\$ 4,131.22	\$ 403.32
Wesleyan	\$ 1,012.43	\$ 1,000.00	\$ (12.43)
TOTAL Athens	\$ 5,240.33	\$ 7,605.94	\$ 2,365.61
Other			
Bentley Creek Wesleyan Church	\$ 300.00	\$ -	\$ (300.00)
Chemung Christian Fellowship	\$ -	\$ 1,543.23	\$ 1,543.23
Chemung UM	\$ -	\$ 305.00	\$ 305.00
Federated	\$ 650.00	\$ 250.00	\$ (400.00)
Litchfield UMC	\$ -	\$ 1,045.00	\$ 1,045.00
Lockwood UMC	\$ 25.00	\$ -	\$ (25.00)
Ulster UMC	\$ 134.00	\$ 100.00	\$ (34.00)
TOTAL Other	\$ 1,109.00	\$ 3,243.23	\$ 2,134.23
Sayre			
Church of God	\$ 150.00	\$ -	\$ (150.00)
Crossroads Family Ministries (Keystone)	\$ 330.00	\$ 360.00	\$ 30.00
First Baptist	\$ 100.00	\$ 100.00	\$ -
G.V. Assembly of God	\$ 360.00	\$ 1,007.24	\$ 647.24
Presbyterian	\$ 1,000.00	\$ 1,000.00	\$ -
Redeemer	\$ 75.75	\$ 1,351.00	\$ 1,275.25
Sayre Christian	\$ 565.00	\$ 315.00	\$ (250.00)
St. John Lutheran	\$ 1,370.00	\$ 3,562.00	\$ 2,192.00
TOTAL Sayre	\$ 3,950.75	\$ 7,695.24	\$ 3,744.49
Valley Clergy	\$ 485.00	\$ -	\$ (485.00)
Waverly			
Blessed Trinity Parish	\$ 2,073.73	\$ 1,752.50	\$ (321.23)
Christian Life	\$ 1,200.00	\$ 2,600.00	\$ 1,400.00
First Baptist	\$ -	\$ 608.10	\$ 608.10
First Presby.	\$ -	\$ 4,471.00	\$ 4,471.00
Waverly:Grace Episcopal	\$ 320.00	\$ -	\$ (320.00)
N.Wav.Chapel	\$ 650.00	\$ 600.00	\$ (50.00)
UMC	\$ 326.17	\$ 415.00	\$ 88.83
TOTAL Waverly	\$ 4,569.90	\$ 10,446.60	\$ 5,876.70
TOTAL Churches	\$ 15,354.98	\$ 28,991.01	\$ 13,636.03
Community Chest	\$ 4,125.00	\$ 5,000.00	\$ 875.00
Corporate-Organizational Gifts	\$ 8,465.00	\$ 18,318.56	\$ 9,853.56

The Bridge of the Penn-York Valley Churches
Income / Expense Comparison 2011-2012 (without Flood Relief Funds) Page 2

Income	2011	2012	Difference
Designated Income			
25th Anniversary Celebration	\$ -	\$ 2,010.00	\$ 2,010.00
Clothes Closet	\$ -	\$ 300.00	\$ 300.00
Website	\$ 2,094.96	\$ -	\$ (2,094.96)
TOTAL Designated Income	\$ 2,094.96	\$ 2,310.00	\$ 215.04
FEMA	\$ 1,704.00	\$ -	\$ (1,704.00)
Fundraising			
Arts Fest	\$ -	\$ 548.44	\$ 548.44
Bake Sale	\$ 230.00	\$ -	\$ (230.00)
Candle Fundraiser	\$ 782.00	\$ 905.00	\$ 123.00
Sayre Theatre Art Sales	\$ 165.00	\$ -	\$ (165.00)
TOPS Gift Card	\$ 500.00	\$ -	\$ (500.00)
Sleep Out	\$ 7,830.61	\$ 9,512.63	\$ 1,682.02
Valley Chorus	\$ -	\$ 3,000.00	\$ 3,000.00
TOTAL Fundraising	\$ 9,007.61	\$ 13,966.07	\$ 4,958.46
Individual Gifts	\$ 21,497.87	\$ 20,625.49	\$ (872.38)
Pass Through Income			
Kids at Risk	\$ 125.00	\$ -	\$ (125.00)
United Way Shell Oil Food Relief Grant	\$ -	\$ 8,000.00	\$ 8,000.00
Valley Food Pantry	\$ -	\$ 177.95	\$ -
TOTAL Pass Through Income	\$ 125.00	\$ 8,177.95	\$ 8,052.95
PayPal Deposit	\$ 0.31	\$ -	\$ (0.31)
United Way	\$ 15,000.00	\$ 15,000.00	\$ -
TOTAL INCOME	\$ 77,374.73	\$ 112,389.08	\$ 35,014.35

EXPENSES	2011	2012	Difference
Arts Fest Expense	\$ -	\$ 95.94	\$ (95.94)
Auto Repair	\$ -	\$ 234.26	\$ (234.26)
Catastrophic Assist Non-Flood Relief	\$ -	\$ 1,850.00	\$ (1,850.00)
Designated Expense			
25th Anniversary	\$ -	\$ 1,477.48	\$ (1,477.48)
Website	\$ 2,134.91	\$ -	\$ 2,134.91
TOTAL Designated Expense	\$ 2,134.91	\$ 1,477.48	\$ 657.43
Electricity			
FEMA Eligible	\$ 13,332.82	\$ 15,428.20	\$ (2,095.38)
NFEMA	\$ 4,536.72	\$ 3,338.98	\$ 1,197.74
TOTAL Electricity	\$ 17,869.54	\$ 18,767.18	\$ (897.64)
Fuel			
FEMA Eligible	\$ 26,536.57	\$ 29,222.35	\$ (2,685.78)
NFEMA	\$ 10,010.13	\$ 7,897.02	\$ 2,113.11
TOTAL Fuel	\$ 36,546.70	\$ 37,119.37	\$ (572.67)
Furniture	\$ 1,848.00	\$ 2,548.00	\$ (700.00)
Gasoline	\$ 765.20	\$ 390.56	\$ 374.64
Lodging	\$ 127.98	\$ 1,728.90	\$ (1,600.92)
Meals	\$ 44.53	\$ 50.00	\$ (5.47)

The Bridge of the Penn-York Valley Churches
Income / Expense Comparison 2011-2012 (without Flood Relief Funds) Page 3

Income	2011	2012	Difference
Miscellaneous			
Home Repair	\$ 200.00	\$ -	\$ 200.00
Other Miscellaneous	\$ 287.73	\$ -	\$ 287.73
TOTAL Miscellaneous	\$ 487.73	\$ -	\$ 487.73
Office-Adminstrative			
Administrative Clearinghouse	\$ 62.50	\$ 1,100.00	\$ (1,037.50)
Bank Fees	\$ 50.78	\$ 12.00	\$ 38.78
Box.net fee	\$ 300.00	\$ 300.00	\$ -
Clothes Closet			
Construction	\$ -	\$ 119.74	\$ (119.74)
Electricity for Clothes Closet	\$ 693.08	\$ 615.57	\$ 77.51
Other Ofc-Adminstrative: Clothes Closet	\$ 831.08	\$ -	\$ 831.08
TOTAL Clothes Closet	\$ 1,524.16	\$ 735.31	\$ 788.85
Helping Hands			
Electricity for Warehouse	\$ 115.70	\$ 102.86	\$ 12.84
Mileage Reimbursement	\$ 1,816.00	\$ 1,584.75	\$ 231.25
Miscellaneous	\$ -	\$ 155.60	\$ (155.60)
TOTAL Helping Hands	\$ 1,931.70	\$ 1,843.21	\$ 88.49
Miscellaneous	\$ 18.00	\$ 203.88	\$ (185.88)
P. O. Box Fee	\$ -	\$ 46.00	\$ (46.00)
PayPal Fees	\$ 3.10	\$ -	\$ 3.10
Postage	\$ 463.92	\$ 505.24	\$ (41.32)
Supplies	\$ 932.83	\$ 1,003.82	\$ (70.99)
Telephone, Clearinghouse	\$ 1,069.02	\$ 1,503.80	\$ (434.78)
Website Charges Mthly & Annual	\$ 22.95	\$ 295.35	\$ (272.40)
Other Office-Adminstrative	\$ -	\$ -	\$ 1.00
TOTAL Office-Adminstrative	\$ 6,378.96	\$ 7,548.61	\$ (1,169.65)
Pass Through Expense			
Kids at Risk	\$ 125.00	\$ -	\$ 125.00
United Way Shell Oil Co Grant	\$ -	\$ 8,000.00	\$ 8,000.00
TOTAL Pass Through Expense	\$ 125.00	\$ 8,000.00	\$ (7,875.00)
Prescription & Medical	\$ 1,284.73	\$ 857.84	\$ 426.89
Rent			
FEMA Eligible	\$ 14,726.90	\$ 21,905.00	\$ (7,178.10)
NFEMA	\$ 8,319.97	\$ 7,272.00	\$ 1,047.97
TOTAL Rent	\$ 23,046.87	\$ 29,177.00	\$ (6,130.13)
Security Deposit	\$ 10,495.00	\$ 13,706.00	\$ (3,211.00)
SEWER	\$ 1,389.55	\$ 1,642.31	\$ (252.76)
Transportation	\$ 373.83	\$ 258.50	\$ 115.33
Water	\$ 3,013.54	\$ 4,590.88	\$ (1,577.34)
TOTAL EXPENSES	\$ 105,932.07	\$ 130,042.83	\$ (24,110.76)
OVERALL TOTAL	\$ (28,557.34)	\$ (17,653.75)	\$ 10,903.59

2012 Flood Relief 1/1/2012 through 12/31/2012



INFLOWS

Flood Relief	\$	7,026.00
TOTAL Designated Income Inflow	\$	7,026.00

OUTFLOWS

Catastrophic Assistance Flood Relief

Additional Assistance Rent	\$	300.00
Additional Assistance Storage	\$	300.00
Camp Noah	\$	1,139.56
Fuel	\$	2,165.86
Gift Certificates Gift Cards	\$	(600.00)
Home Repair		
Appliances	\$	450.00
Building Supplies	\$	14,350.00
Electrical	\$	900.00
Heating	\$	900.00
Plumbing	\$	450.00
Other Catastrophic Assistance Flood Relief:Home Repair	\$	1,612.63
TOTAL Home Repair	\$	18,662.63
Rent	\$	450.00
Second Round Flood Relief	\$	3,850.00
Special Flood Relief Matchin Grant	\$	5,000.00
Other Catastrophic Assistance Flood Relief	\$	2,250.00
Flood Relief Expenses		
Extended Clothes Closet	\$	1,380.00
Other Expenses	\$	209.54
Waverly Furniture Warehouse	\$	1,515.66
TOTAL Flood Relief Expenses	\$	3,105.20
TOTAL Catastrophic Assistance Flood Relief Outflow	\$	36,623.25

<u>Account</u>	<u>Beginning Balance</u>	<u>2012 Income</u>	<u>2012 Expenses</u>	<u>2012 Balance</u>
Flood Relief	\$33,416.40	\$7,026.00	\$(36,623.25)	\$3,819.15

Respectfully Submitted,
Waneta Warner



Audit Committee

Using the checklist previously developed as a guide, a review of the 2012 financial records of The Bridge was completed. The main Bridge and the Kids at Risk checking accounts, records, and reports were reviewed. Both accounts were found to be without material errors.

It is our finding that there is adequate segregation of financial responsibilities considering our size and function with the most recent implemented recommendation of adding the financial secretary position.

As is our custom, some suggestions were given to the financial officers to improve our process.

Many thanks go to those involved with maintaining the financial records of The Bridge, specifically, Waneta Warner, Treasurer; Sherry Pinkard, Assistant Treasurer; Lorraine Chernosky, Financial Secretary, and Sherry Gabauer, Kids at Risk Coordinator. Few understand the time and effort that goes into managing our process. Thank you so much for your service to the Lord and to those in need in our community!

Respectfully Submitted,

2012 Audit Committee: Kim Paul & Pastor Steve Reynolds

2012 Leadership Team

Officers:

Co-Presidents: **Richard & Bobette Friend**, Litchfield United Methodist

Vice President: **Don Jayne**, Waverly First Presbyterian Church

Secretary: **Kay Daniels**, St. John Lutheran Church

Treasurer: **Waneta Warner**, Bentley Creek Wesleyan Church

Assistant Treasurer: **Sherry Pinkard**, Athens Presbyterian Church

Other Leadership:

Pastoral Advisor: **J. Stephen Reynolds**, Waverly First Baptist Church

Corresponding Secretary: **Sue Kopatz**, Athens First Presbyterian Church

Financial Secretary: **Lorraine Chernosky**, Sayre Christian Church

Clearinghouse Coordinator: **Larry Day**, North Waverly Chapel

Voucher Writer Trainer: **Larry Day**, North Waverly Chapel

Catastrophic Coordinators: **Larry Day & Kim Paul**, North Waverly Chapel; **Don Jayne**, Waverly First Presbyterian Church

Clothes Closet Coordinators: **Kim Paul**, North Waverly Chapel & **Billie Jean White**, Waverly C&MA

Helping Hands Coordinator: **Charlie Hammond**, Church of the Epiphany

Kids at Risk Coordinator: **Sherry Gabauer**, Church of the Redeemer

Community Dinners Coordinators: **Sandy Campbell & Sue Kopatz**, Athens First Presbyterian

Mobile Food Pantry, Waverly: **Kim Paul**, North Waverly Chapel & **Don Jayne**, Waverly First Presbyterian

Historian: **Kim Paul**, North Waverly Chapel