

annual report

2018



The Bridge of the Penn-York Valley Churches

March 2019

P.O. Box 202

Sayre, PA 18840

570-888-8826

www.thevalleybridge.org



Bridging the gaps of life in the name of Jesus Christ

*Whoever oppresses a poor man insults his Maker,
but he who is generous to the needy honors him.*

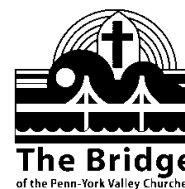
Proverbs 14:31

contents

About Us	4
President's Letter	5
2018 Highlights.....	6
Clearinghouse	7
Voucher Writer Training	7
Clothes Closet	8
Helping Hands	9
Kids at Risk	10-11
Community Dinners	12
Mobile Food Pantry	13
Valley Food Pantry.....	14-15
Catastrophic Assistance.....	16
Interim Assistance Program (IAP).....	17
Individual Development Account (IDA).....	17
Sleepout	18
Financial Report	19-22
Financial Secretary	23
Corresponding Secretary	24
Audit Committee Report.....	25
2018 Leadership Team.....	25



About Us



The Bridge of the Penn-York Valley Churches is an all-volunteer, non-profit organization of churches in the Penn-York Valley that serves the residents in the Waverly, Sayre, and Athens school districts. The aim of *The Bridge* is to bridge the gaps of life in the name of Jesus Christ and to help when and where other agencies are not able.

Specifically, the ministries of *The Bridge* in 2018 included offering voucher assistance for emergency needs especially housing related needs; catastrophic assistance; interim assistance, free furniture and household goods through *Helping Hands*; clothing, household goods, toys and books through the *Clothes Closet*; free clothing, hygiene items, school supplies and other assistance through *Kids at Risk*; food assistance through community meals, the *Mobile Food Pantry* and *The Valley Food Pantry*; and referrals to other services through our *Clearinghouse*.

The Bridge is supported by its member churches, individuals, The United Way, Waverly Community Chest, businesses, and community organizations. *The Bridge* generally holds two major fundraising events each year. One is the Sleepout held the Friday and Saturday after Thanksgiving. It is intended to bring awareness to those in need and to raise funds for the ministry. The other event is a Chicken Barbeque and Vintage Furniture Sale held in September. The Board of Directors of *The Bridge* meets monthly on the second Thursday of each month.

We are so very thankful for all those who participate in the ministry—donors and volunteers alike! We continue to seek God's direction as we serve in the ministry of *The Bridge*.

Our Member Churches and Partners in 2018

Athens United Methodist Church
Athens Wesleyan Church
Bentley Creek Wesleyan Church
Blessed Trinity at St. James
Chemung Christian Fellowship
Christian & Missionary Alliance, Waverly
Christian Life Church
Church of the Redeemer
Crossroads Family Ministries
Epiphany Parish
Encounter Church
Federated Church, East Smithfield
First Baptist Church, Sayre
First Baptist Church, Waverly
First Church of God, Sayre
Grace Episcopal, Waverly
Greater Valley Assembly of God

Litchfield United Methodist Church
Lockwood United Methodist Church
New Generation Church, Milan
North Waverly Chapel
St. John Lutheran Church
Sayre Christian Church
Seventh Day Adventist Church
Sonrise Christian Life Church
The Salvation Army
Trinity Episcopal Church
Valley United Presbyterian Church
Waverly United Methodist Church

Partners:
Catholic Charities, Tioga Outreach
Robert Packer Hospital Chaplain
Tioga Rural Ministries

Serving those in need since 1987

President's Letter



It has been another busy year for *The Bridge*. It is so wonderful to look back over the past year to see all the exciting things the Lord has directed us to do. We have been so blessed and have much to be thankful for. Here are a few highlights from the year.

In 2018, our Interim Assistance Program completed one case and we are in the process of completing three more with our sights on the 5th and final case of this pilot program. We hope that this program will become a permanent addition to our ministries.

This year we had 2 catastrophic cases. Both of these cases were related to the localized flooding in Bentley Creek. *The Bridge* was able to complete these cases with assistance from other local agencies.

The Helping Hands Ministry had a very successful 4th Annual Chicken BBQ and Vintage Sale and raised over \$5,800.

The theme of the parade float this year was "Warm up the Night." It was a beautiful float. Thanks to all the volunteers who designed, built it, and walked in the parade.

Our Sleepout received a new makeover this year under the direction of an energized team lead by **Joe & Jennifer Joyce, Waneta Warner** and **Kim Paul**. A new location, the parking lot of the Guthrie Allergy Building on the corner of Desmond Street & Packer Avenue, was found providing great visibility. Hot chocolate and cookies were served. And although the weather was a bit wet, that didn't dampen the spirits of the volunteers who came and stayed for an hour or two or even overnight.

I would like to thank a few volunteers who resigned at the end of this year for all their years of service. First, Corresponding Secretary, **Sue Kopatz**. We thank her for all her years of dedication and the beautiful handwritten thank you notes. **Sandy Campbell**, Fellowship Meals Coordinator. We thank her for all her years of organizing the meals, preparing the food, and cleaning up after. They were such a blessing to all those that came out. **Sherry Pinkard**, Assistant Treasurer. We thank her for her ten years of service in this position depositing for the ministry and sharing with the Board the thank you notes received.

We have a few positions that we like to fill. We are in need of a Secretary. This is an officer position. The other positions that we are in need of are a Publicist, Web-Master, and Photographer. If you are interested please contact either myself or Kim Paul.

The Bridge is starting to look for a new location either a piece of land to build on or a preexisting building that could house all our ministries. So spread the word! Let God lead us to the perfect spot.

Once again we are so thankful for the generous support of our churches and the community. We are excited to see where God will take *The Bridge* in the coming year and beyond. Continue to keep *The Bridge* in prayer as we carry on doing God's work. I hope that you will read our annual report and rejoice with us in what God has done.

A handwritten signature in cursive script that reads 'Marilyn'.

Marilyn Weber, President



2018 Highlights



Valley Food Pantry celebrated its 40th year of ministry with an Open House and received a major upgrade with a \$5,000 grant from Leprino's Grant and volunteers from Leprino's through the United Way's Day of Caring as well as Bridge volunteers. In 2018, 1,413 households were served including 2,613 adults and 1,161 children.

Interim Assistance Program Pilot was launched at the end of 2017 and we have completed or are actively engaged in 4 cases.

Christmas Parade Float this year had a "Warm up the Night" theme in the 20th year of participation.

16th Annual Sleepout was held at a new location, the Guthrie Desmond Street Practice on November 24 & 25 raising awareness and over \$11,500. A School District Challenge, specifically the Sock Challenge, was added to the event this year to encourage participation by all ages.



4th Annual Barbeque and Vintage Sale was held on Saturday, September 22 at Helping Hands and raised over \$5,800.

Vouchers were given to 285 households for over \$73,000 to assist with electric (74), fuel (69), rent (67), security deposit (59), water/sewer (9), and other emergency needs (7) thereby helping 396 adults and 271 children.

Catastrophic Assistance was provided to two households this year related to the localized flooding in Bentley Creek.

Clothes Closet served 2,007 households giving out 32,127 free items of clothing, small housewares, books, and toys.

Helping Hands assisted 132 households with furniture and appliances made possible by 203 donations.

Kids at Risk served a total of 951 students in the school districts of Athens, Sayre, and Waverly with clothing, hygiene items, school supplies, and other needs anonymously by partnering with school personnel who identified needs and distributed items.

Community Dinners were offered weekly in the community with *The Bridge* sponsoring four of the Thursday community dinners offered in the community.

Mobile Food Pantry - Provided food to 1,605 households thereby assisting 4,059 people with 35,523 meals at the North Waverly Chapel at the monthly distributions.

Financial Peace University was offered to the community as a trial due to the desire to provide financial management education to the community. Another is planned for 2019.



Clearinghouse

The Clearinghouse serves as an access point for *The Bridge's* services by responding to inquiries regarding *The Bridge* and its services. If applicable, individuals seeking financial assistance or furniture are directed to a member church to complete an application and receive a *Bridge* voucher if they are eligible. Household income, number of people in the household, frequency of requests and residence (Sayre, Athens or Waverly school district) determine eligibility. Referral is made to other organizations when *The Bridge* is not able to help. Vouchers are used for rent/security deposit, utility shutoff, furniture and other emergency situations.

Voucher Type	Number
Electric	76
Security Deposit	58
Rent	56
Fuel Oil	33
Natural Gas	24
Propane	9
Water	7
Miscellaneous	3
Kerosene	2
Lodging	1
Sewer	1
Total	270

2018 Vouchers

Voucher Type	Number
Furniture	121
Catastrophic Assistance	2
Interim Assistance	3

Clearinghouse Hours

Monday 9 am – 12:30 pm
 Tuesday 9 am – 12:30 pm
 Wednesday 9 am – 12:30 pm
 Thursday 9 am – 11:30 am

570-888-8826

clearinghouse@thevalleybridge.org

Respectfully submitted,
Larry Day, Clearinghouse Coordinator

Voucher Writer Training

The Bridge is dependent on voucher writers in our member churches to interview people requesting assistance. Without trained voucher writers we would not have been able to assist these individuals and families.

Voucher writing training was provided to 3 individuals in 2018. We are grateful for these new people and are thankful for the service of those who have and continue to serve the people of our community in this way.



We are always willing to train pastors and others to write vouchers. Interested individuals should contact *The Bridge* Clearinghouse at (570) 888-8826.

Respectfully submitted,
Larry Day, Voucher Writer Trainer



Clothes Closet

The Clothes Closet is a ministry of *The Bridge* located at the North Waverly Chapel which provides clothing and apparel, small household items, and toys to those in need without requiring a voucher and with no geographical restrictions. Individuals and families find out about the ministry through voucher writers, churches, friends, medical personnel, and the media. The ministry relies entirely upon donations from generous individuals and businesses in the community.

The Clothes Closet continued to operate twice a week, Tuesdays from 6:30 pm to 8:30 pm and Wednesdays from 12 noon to 2 pm serving those in need. In 2018, we had an average of 167 household contacts and distributed 2,677 items each month for a grand total of 2,007 household contacts and 32,127 items distributed.



The chute on the south end of the Clothes Closet continues to be a huge blessing as people can drop off donations in small, tied bags when it is convenient for them instead of being required to do so when we are open. We are very thankful for all those who so generously donated items and for the numerous volunteers who make this ministry possible. We have 10 teams of 2-3 people each who work once a month while we are open to clients as well as a number of people willing to be substitutes. We also have a team led by **Marie Wheeler** which works on Tuesday and Thursday mornings to restock and sort donations as well as a few people who work extra times when needed. A special thank you to **Cathy Moliski** who is one of these people and spends several days each week working with the team and by herself to keep up with the many donations flowing in!

Also, a special note of thanks to **Marilyn Weber** and **Marion Dabroski** who faithfully handled the data entry of clients served and items distributed this year.

A Clothes Closet Appreciation Luncheon was held on Thursday, November 15 at the Fortune Buffet. Most of the volunteers were able to attend. **Mary Cerutti** and **Sally Clapp**, who retired at the end of the year, were honored for their 13 years of service and are ones of only a few who have worked at the Clothes Closet since it moved to the North Waverly Chapel in 2005. In addition, **Marie Wheeler** and **Cathy Moliski** were honored for the dedicated service to the ministry.

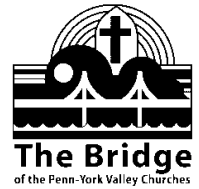


We are so very thankful for all God is doing in and through us at the Clothes Closet.

Respectfully submitted,

Kim Paul, Clothes Closet Coordinator

Helping Hands



The Helping Hands Ministry continues to remain at the Old Quinlan's Park Building in Waverly. We have removed some of the attic walls to create more storage space for our vintage items during the year. The guys have installed a heater in the kitchen to create a warm room. It really does help during the cold winter months. Thanks to **Bob Ward** and **Jim Harbst** for doing the work!



The Chicken BBQ and Vintage sale continues to be a big hit. We had lots of volunteers who came out and worked for weeks pricing and cleaning and getting things ready for the event. This year the Waverly business Association did a Fall Festival at the East Waverly Ball Park on the same day and it created lots of traffic going by. People stopped in to see what we had. We sold out of chicken at 2pm. We are planning to do it again at the same time next year. A special thank you goes to **The Rollin' Dead Motorcycle Club** for continuing to cook the chicken and to **Bill Hillyard** from Epiphany Parish for continuing to cook our sides for the meal.

The parade float theme this year was "Warm up the Night". The creative minds behind this design were **Pastor Helen Learn** and **Cathy Moliski**. The Helping Hands Team built the design and painted it. It was a beautiful float. It is always such fun for us to build it. **Tim Shirley** lets us use his trailer and drives it in the parade. Thank you to all the volunteers who came out and walked in the parade and handed out candy to the waiting children.



The guys were also able to give the Sleepout house and new look this year. They painted the interior and exterior. It looked great—amazing what new colors will do. Also, a special thanks to the **Dandy** for donating a new sign for the front of the Sleepout structure. Next year the guys will be building a roof and sides.

Our volunteers are such a dedicated group of guys and gals. I want to thank them for all their efforts—they are always there to lend a helping hand!! **Jim Harbst, Bob Ward, John Simonds, Howard Brewster, Charlie Brown, CT Weber, Eugene Learn, Craig Menning, and Tim Shirley**. A very special thank you to **Janet Lambert** and **Cathy Moliski** for coming in when I have not been able and for their dedication to our ministry. A special thanks to **Fawn, Emily, and Samantha Shirley** for helping with the Chicken BBQ, and being in the parade. We always love having them as part of our team.

Thank you to our community who continues to donate furniture to us so that we can continue to help those in need. Our ministry is thriving because of you.

Respectfully submitted,

Marilyn Weber, Helping Hands Coordinator

Kids at Risk



Kids at Risk Coordinator, Cindy Jones, assembling items to be distributed to local schools.

The ministry of Kids at Risk is beginning its 25th year of service to children of the Athens, Sayre and Waverly School Districts. Kids At Risk works in conjunction with teachers, secretaries, nurses and guidance counselors to provide clothing, school supplies, services, and hygiene items to students in need. The mission of Kids at Risk is to provide these needed items to students who may be in uncomfortable or unhealthy situations in an attempt to help them to be more successful in school, and achieve a higher level of self-esteem. In 2018 Kids at Risk helped approximately 950 students.

Kids at Risk is able to provide this service thanks to generous donations from local churches, businesses, individuals, and community organizations. 100% of these donations go to the ministry. Items not on hand in the Kids at Risk room are purchased and delivered to schools as needed. As in the past, we have received assistance and donations from our area youth.



Bonnie & Deb, secretaries from H. Austin Snyder Elementary receive back to school supplies for their students.



Youth group members from St. John Lutheran Church and The Church of the Redeemer assemble hygiene kits.



Donations & purchases ready for distribution when a need is identified.

It was very encouraging to see the tremendous support of so many area school students and their families as well as the community as 6,003 pairs of socks were collected during the first Bridge School District Sleepout Challenge!



Students from the Athens Area High School look over their collection of socks from the Challenge.



H. Austin Snyder Elementary students bring socks for School District Sleepout Challenge



Linda, Pam, and Amy help sort socks received from *The Bridge* Sleepout Challenge

The beginning balance in the checking and investment accounts for January 2018 was \$10,334.81. The ending balance was \$9,365.44. See the table with details below.

	Beginning	Income	Expense	Transfer	Ending
Checking	\$930.05	\$1,780.68	\$2,919.28	\$1,400.00	\$1,191.45
Savings	\$9,404.76	\$169.23	\$0	-\$1,400.00	\$8,173.99
Total	\$10,334.81	\$1,949.91	\$2,919.28	\$0	\$9,365.44

Respectfully submitted,
Cindy Jones, Kids at Risk Coordinator

Mission: We will help children, grades K-12, through the schools in the Athens, Sayre and Waverly School Districts, attempting to meet the need which cannot be met in any other way. We will make every effort to preserve the self-esteem of the child and family as we reach out in the name of Jesus Christ.



Community Dinners

1.

In the Gospel of John, Jesus challenged Peter to take care of His sheep. We, too, should be Jesus' disciples and care for people who are less fortunate or just in need of kindness (not judgment). We should remember the first people to receive the message of the birth of our Savior.

The Bridge serves four Thursday night community dinners each year. In 2018, they were:

- February 22nd – Church of the Redeemer
- April 5th – Waverly United Methodist Church
- July 12th – Athens United Methodist Church
- October 18th – St. James Catholic Church (this year we switched with the Baron Grange)



We prepare and serve all meals except for the meal at the Church of the Redeemer (we provide desserts and servers). The cost of all meals has been covered by donations. The desserts have been provided by The Salvation Army Church. Many thanks to the people who volunteer to help serve and clean up after the meals.

The schedule for the free dinners in the community is as follows:

1 st Thursday	Waverly United Methodist	4:30-6:00 PM
2 nd Thursday	Athens United Methodist	4:30-6:00 PM
3 rd Thursday	St. James Catholic	4:30-5:30 PM
4 th Thursday*	Church of the Redeemer	4:00-6:00 PM

*If a month has 5 Thursdays: The Church of the Redeemer will serve the 5th and the Valley United Presbyterian Church serves the 4th at 4:30-6:00p.

In addition to the Thursday night dinners, free meals are provided in the community by The Salvation Army Church on the 1st and 3rd Mondays and The Epiphany Church on the 2nd Tuesday.

I would like to thank *The Bridge* for trusting me with this important outreach. It is not just providing food—it is a time of fellowship with our guests.

Submitted by:

Sandy Campbell, Community Dinner Coordinator





Mobile Food Pantry

The Bridge has continued to partner with the Food Bank of the Southern Tier to sponsor a Mobile Food Pantry each month on the third Wednesday of each month at 10a throughout 2018. We provide an average of 25 volunteers for each distribution. Volunteers come from our member churches of *The Bridge* as well as the Valley Area LEAH, a Christian homeschool group in the Valley.



There are a variety of jobs required including directing traffic/parking, signing in people using a computerized database, directing people, stocking the tables around the truck, bagging produce, handing out food, and helping people carry food to their vehicles. We have very faithful volunteers which make it all possible. In addition, we are very grateful for the graciousness and hospitality of the North Waverly Chapel for allowing the

distributions to take place on their property and for allowing us to use their indoor facilities. What a blessing!

In 2018, there were 12 distributions with serving 4,048 people including 1,024 kids, 2,239 adults and 784 seniors with a total of 35,523 meals. Those served mainly came from Waverly, Sayre, and Athens, but a total of 40 zip codes were represented. Individual household contacts averaged three per year. Our numbers at the end of 2018 were up with us serving 175-180 in the months at the end of the year.

The hospitality ministry that started at the end of 2017 has continued through 2018. We provide beverages and conversation in hopes of connecting and ministering more with the people we are serving as they are waiting for their food.



The hot chocolate served seems to be a favorite. We are thankful to Thrivent Financial for supplying many of the supplies for the ministry with the funds remaining after the Sleepout outreach. We miss **George Herrick**, who passed away unexpectedly in 2018 and was our first host along with his wife, **Gladys**.

It has been a privilege to serve God and the people in this community through the ministry of the Mobile Food Pantry in 2018 along with co-coordinator **Don Jayne** and the many faithful volunteers.

Respectfully submitted,
Kim Paul, MFP Site Coordinator

Valley Food Pantry

The Valley Food Pantry celebrated its 40th year of existence this year with an Open House and a major renovation made possible by a grant from Leprino's and manpower provided by Leprino employees through the United Way's Day of Caring as well as Bridge volunteers. The grant made it possible to purchase new freezers, a refrigerator, shelving units, cart, desk, ceiling tiles, signage, paint, and other items to improve the appearance and facilitate the daily operation of the pantry. What a blessing!





The food pantry is open Monday through Friday 10a-12n and Monday through Thursday 2p-4p. The ministry has been in the same location for many years at 418 Waverly Street, Waverly thanks to the generosity of the Soprano's.

We are truly blessed to have the dedicated volunteers who give of their time to ensure that the Valley Food Pantry remains open daily and is stocked with food to serve those in need in the

community. **Liz Coco** remains the director and **Howard Brewster** the assistant director. The volunteers were honored with a dinner to recognize their dedication to the ministry.

Also, we are so thankful for the churches, individuals, and organizations who give so generously both with food and monetary donations. It is because of these donations and dedicated volunteers that we are able to continue this ministry and to be a blessing to those in need in our community.



2018 Activity

2018	PA	NY	TOTAL
Households	761	652	1,413
Adults	1,409	1,204	2,613
Children	569	592	1,161
Total Helped	2,158	1,796	3,374

	Beginning	Income	Expense	Transfer*	Ending
Checking	\$6,636.91	\$16,530.16	\$13,986.81	\$0	\$9,180.26
Savings	\$20,183.52	\$380.40	\$0.00	\$0	\$20,563.92
Total	\$26,820.43	\$16,910.56	\$13,986.81	\$0	\$29,744.18

Respectfully submitted,
 Kim Paul for **Liz Coco**
 Valley Food Pantry Coordinator

Catastrophic Assistance



There were two Catastrophic Assistance cases in 2018, both occurred as a result of localized flooding in Bentley Creek. The one case involved a mobile home that was washed off its foundation. We were able to assist in providing funds to get the home put back on its foundation and the skirting replaced.

The second case was more involved and assistance was provided over a period of several months. The home in this case was flooded in June and then again in September with no flood insurance. The basement needed mucked out and the furnace and hot water heater needed replaced since they were ruined by the flood water.



We were able to partner with the American Baptist men who cleaned out the basement which requires special training and equipment. In addition, they were also able to assist with some other issues unrelated to the flooding in the home including a portion of the roof in need of repair.



We helped to apply for a Guthrie flood grant which was awarded (\$500) toward the project. We tried partnering with a number of others including Bradford County Grants, Valley Relief Council, Hezekiah's Hands, to name a few, but were unable to procure additional funding. After getting estimates and Board approval, a new furnace and hot water heater were installed on the first floor and 2 sump pumps installed in the basement.

Probably most encouraging with this case was the ability to provide encouragement and emotional and spiritual support along with the physical changes. The voucher

writer, **Waneta Warner**, who lives in the area and first brought the need forward, was able to connect in very meaningful ways in addition to the contact with the Catastrophic Assistance Coordinator. Waneta was able to make a personal connection and invited the client to church where the client is now attending and an active participant. It seems our help made a genuine difference not only in the physical realm, but also in the emotional and spiritual areas as well. It is such a privilege to see God at work!



Respectfully submitted,

Kim Paul

Catastrophic Assistance Coordinator



Interim Assistance Program (IAP) Pilot

The Interim Assistance Program began in 2017 with our first client. In 2018, we have worked with an additional 3 households with all 3 carrying over into 2019. The assistance is aimed at helping individuals or families who have experienced a significant event causing a short-term need that requires more than our regular assistance provides. It is only permitted to be used once and given over a period of 3-6 months. Once approved for the program, clients are partnered with a member church by the Interim Assistance Coordinator. Goals are mutually determined and evaluated on a regular basis. The Pilot was approved for 5 cases with an initial limit of \$1,500 each. It has been a blessing working with individuals and families building relationships as we provide assistance and support. In 2019, we plan on completing the 3 cases in process which started in 2018 and take on one more. We will then evaluate the program to see if it should be added to the ministry on a permanent basis.

Individual Development Account (IDA)

In 2017, *The Bridge* Board approved pursuing the concept of offering a matching savings program, Individual Development Account (IDA), for households at 200% of poverty or below for the purchase of a predetermined asset such as a primary residence or automobile commonly known as an Individual Development Account (IDA). The proposed program requires coming up with a process of identifying potential participants, developing an application and approval process, identifying a financial institution to partner with, providing matching funds at a predetermined rate and limit, and developing educational support necessary for the required training during the process of saving (possibly 1-5 years).

Why are we considering this type of program? We as an organization would like to do more "bridging the gaps" in coming along-side people to support them in their journey and help to make meaningful change in their lives. Though we will not be able to offer this assistance to large numbers of people, we are hopeful that for those we do, we can make a significant difference in their lives as we have the opportunity to have longer-term contact and share the love of Christ. We haven't made much progress in this endeavour in 2018, but hope to do so in 2019.

Respectfully submitted,
Kim Paul

*The righteous is concerned for the rights of the poor,
the wicked does not understand such concern.*
Proverbs 29:7

Sleepout

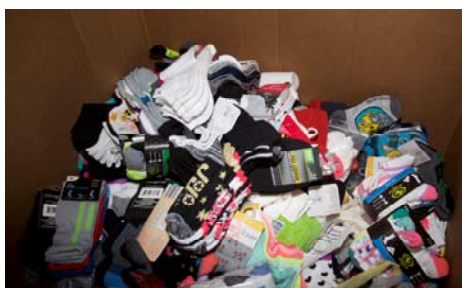


The 16th Annual Sleepout was a success with over \$11,500 raised and the new location at the Guthrie Desmond Street Practice was great! The primary goal of the Sleepout was to raise awareness of the ministry in the community and to get more participation in the event. To that end, we were able to get on Choice Radio a number of times (with one of the times almost ½ hour allotted to talk about various aspects of the Sleepout and the ministry in a round table discussion with **Joe Joyce**, **Cindy Jones**, and **Kim Paul** speaking live!) and in the local papers a number of times as well.

As far as participation goes, we had the most churches to date participate even with the weather less than desirable! There were 14 member churches who took one or more slots including: St. John Lutheran, Church of the Redeemer, Sayre Christian Church, Litchfield United Methodist Church, North Waverly Chapel, Epiphany Church, Valley United Presbyterian Church, Christian Life Church, Waverly Christian & Missionary Alliance, Bentley Creek Wesleyan Church, Athens United Methodist Church, Waverly United Methodist Church, Chemung Christian Fellowship, & Athens Wesleyan Church.



The Helping Hands ministry gave the Sleepout structure an overhaul with new paint and a fresh look. The **Dandy** donated a nice new sign for the front and **Jennifer Joyce** made new signs for donors on the side of the house. The plan is to build a new roof and sides for next year.



This year we added the first annual school district challenge, the Sock Challenge, which was a huge success with 6,003 socks collected. While Athens Area School District edged out Sayre School District by a mere 31 pairs of socks, the real winner is the children in need in our midst who will be receiving the socks.



Each of the businesses that contributed was given a framed certificate of participation designed by **Waneta Warner**.

Also, we added hot chocolate and cookies which were a big hit. Many thanks to **Jennifer Joyce** for coordinating that piece and getting a grant from Thrivent Lutheran to pay for the necessary purchased items. The hot chocolate was especially appreciated as it was very cold!

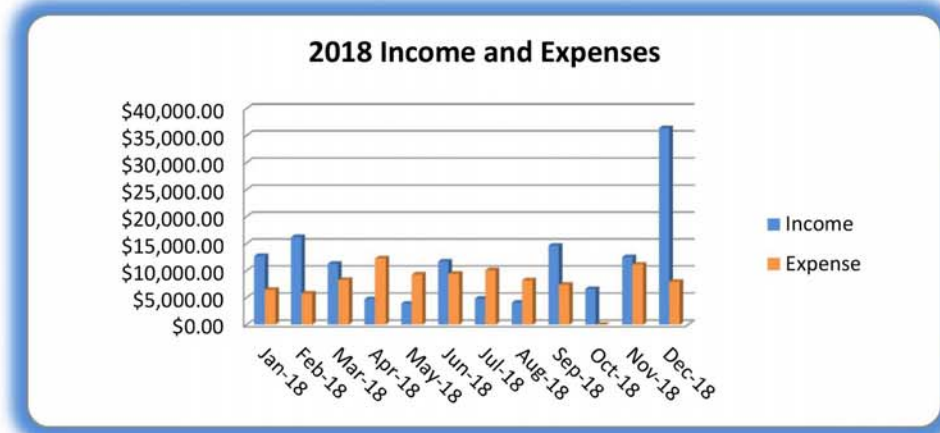


Respectfully submitted,

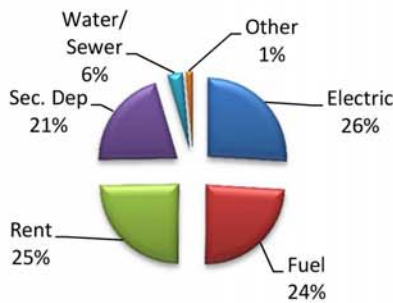
Sleepout Team:

Joe & Jennifer Joyce, Waneta Warner, & Kim Paul

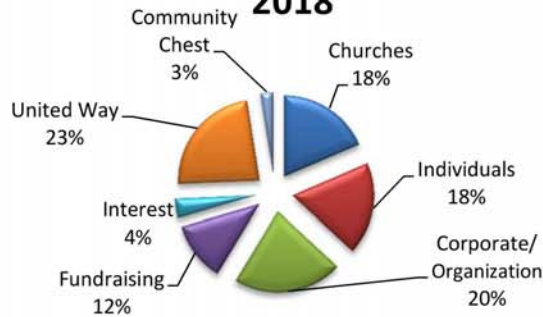
The Bridge of the Penn-York Valley Churches 2018 Treasurer's Annual Report



Types of Vouchers Paid 2018



Funding Sources 2018



Account	Beginning Balance	Income	Expense	Transfers	Balance
Bridge Checking Account	\$ 51,734.86	\$ 133,960.72	\$ (108,438.41)	\$ -	\$ 77,257.17
Bridge Savings Account	\$ 219,494.58	\$ 5,246.11	\$ -	\$ -	\$ 224,740.69
Total Bridge Funds	\$ 271,229.44	\$ 139,206.83	\$ (108,438.41)	\$ -	\$ 301,997.86

Designated Funds within Bridge Account

Guthrie Grant (Database)	\$ 353.76	\$ -	\$ (16.99)	\$ -	\$ 336.77
Leprino Grant	\$ 5,000.00		\$ (5,000.00)	\$ -	\$ -
Helping Hands Warehouse	\$ 800.00	\$ 8,800.00	\$ (9,600.00)	\$ -	\$ -
Clothes Closet	\$ 141.13	\$ -	\$ -	\$ -	\$ 141.13
Weber Memorial	\$ -	\$ 1,000.00	\$ (740.00)	\$ -	\$ 260.00
IAP	\$ -	\$ -	\$ (2,528.77)	\$ 7,500.00	\$ 4,971.23
Beulah Merrill Estate	\$ 136,797.76	\$ -	\$ (4,183.29)	\$ -	\$ 132,614.47
Total Designated Funds	\$ 143,092.65	\$ 9,800.00	\$ (22,069.05)	\$ 7,500.00	\$ 138,323.60
Total Undesignated Funds	\$ 128,136.79	\$ 129,406.83	\$ (86,369.36)	\$ (7,500.00)	\$ 163,674.26

Income and Expense Comparison 2017-2018			
	1/1/2017-12/31/2017	1/1/2018-12/31/2018	Difference
Income	\$ 250,223.05	\$ 139,206.83	\$ (111,016.22)
Expense	\$ 89,000.59	\$ 108,438.41	\$ 19,437.82
Difference	\$ 161,222.46	\$ 30,768.42	\$ (130,454.04)

Historical look at voucher levels: Previously-\$100; May 2009-\$150; May 2010-\$200; May 2011-\$300

2018 Annual Treasurer's Report
Income/Expense Comparison

INCOME	2017	2018	Difference
Churches			
Athens Wesleyan	\$ 150.00	\$ 400.00	\$ 250.00
Bentley Creek Wesleyan Church	\$ 1,000.00	\$ 1,000.00	\$ -
Blessed Trinity Parish (St. James)	\$ 2,012.00	\$ 2,025.00	\$ 13.00
Chemung Christian Fellowship	\$ 2,450.00	\$ 2,400.00	\$ (50.00)
Christian Life	\$ 450.00	\$ 635.00	\$ 185.00
Church of God	\$ 350.00	\$ 400.00	\$ 50.00
CMA, Waverly	\$ 135.00	\$ -	\$ (135.00)
Crossroads Family Ministries	\$ 440.00	\$ 480.00	\$ 40.00
E Smithfield Federated	\$ 150.00	\$ 150.00	\$ -
Encounter Free Methodist	\$ 2,013.92	\$ 1,000.00	\$ (1,013.92)
First Baptist, Waverly	\$ 535.00	\$ 803.00	\$ 268.00
G.V. Assembly of God	\$ 1,200.00	\$ 1,300.00	\$ 100.00
North Waverly Chapel	\$ 900.00	\$ 900.00	\$ -
Redeemer	\$ 125.00	\$ 297.00	\$ 172.00
Sayre Christian	\$ -	\$ 355.00	\$ 355.00
St. John Lutheran	\$ 1,262.50	\$ 4,048.75	\$ 2,786.25
UMC, Athens	\$ 1,763.34	\$ 2,386.00	\$ 622.66
UMC, Litchfield	\$ 1,000.00	\$ 1,100.00	\$ 100.00
UMC, Waverly	\$ -	\$ 90.00	\$ 90.00
Valley United Presbyterian	\$ 6,000.00	\$ 6,000.00	\$ -
TOTAL Churches	\$ 21,936.76	\$ 25,769.75	\$ 3,832.99
Community Chest	\$ 4,000.00	\$ 3,500.00	\$ (500.00)
Corporate-Organizational Gifts	\$ 7,998.83	\$ 20,314.25	\$ 12,315.42
Designated Income			
Beulah Merrill Estate	\$ 136,797.76	\$ -	\$ (136,797.76)
Helping Hands Rent	\$ 9,600.00	\$ 8,800.00	\$ (800.00)
Leprino Food Grant	\$ 5,000.00	\$ -	\$ (5,000.00)
Weber Memorial	\$ -	\$ 1,000.00	\$ 1,000.00
TOTAL Designated Income	\$ 151,397.76	\$ 9,800.00	\$ (141,597.76)
Fundraising			
Chicken BBQ & Sale	\$ 6,323.10	\$ 5,601.75	\$ (721.35)
SleepOut	\$ 8,926.54	\$ 11,353.00	\$ 2,426.46
TOTAL Fundraising	\$ 15,249.64	\$ 16,954.75	\$ 1,705.11
Helping Hands Warehouse			
Delivery Fees	\$ 610.00	\$ 10.00	\$ (600.00)
Donations	\$ -	\$ -	\$ -
Furniture Sales	\$ 580.00	\$ 265.60	\$ (314.40)
TOTAL Helping Hands Warehouse	\$ 1,190.00	\$ 275.60	\$ (914.40)

**2018 Annual Treasurer's Report
Income/Expense Comparison**

	2017	2018	Difference
Individual Gifts			
PayPal Deposit	\$ 4,150.00	\$ 3,559.88	\$ (590.12)
Individual Gifts	\$ 20,185.97	\$ 21,378.97	\$ 1,193.00
TOTAL Individual Gifts	\$ 24,335.97	\$ 24,938.85	\$ 602.88
Interest on Checking	\$ -	\$ 92.46	\$ 92.46
Miscellaneous (incl. Amazon Smile)	\$ 628.07	\$ 105.71	\$ (522.36)
Pass Through Income			
Kids at Risk	\$ 200.00	\$ -	\$ (200.00)
TOTAL Pass Through Income	\$ 200.00	\$ -	\$ (200.00)
Refund	\$ 298.80	\$ -	\$ (298.80)
United Way of Bradford County	\$ 21,000.00	\$ 32,000.00	\$ 11,000.00
United Way of the Southern Tier	\$ -	\$ 209.35	\$ 209.35
WIF Savings Interest	\$ 1,987.22	\$ 5,246.11	\$ 3,258.89
TOTAL INCOME	\$ 250,223.05	\$ 139,206.83	\$ (111,016.22)

EXPENSES

Designated Expense			
Beulah Merrill Estate			
Education Program	\$ -	\$ 695.00	\$ (695.00)
Laptop & Equipment	\$ -	\$ 2,558.67	\$ (2,558.67)
Volunteer Appreciation	\$ -	\$ 62.62	\$ (62.62)
Other	\$ -	\$ 867.00	\$ (867.00)
TOTAL Estate - Beulah Merrill	\$ -	\$ 4,183.29	\$ (4,183.29)
Clothes Closet	\$ 28.50	\$ -	\$ 28.50
Helping Hands Rent	\$ 9,600.00	\$ 9,600.00	\$ -
Interim Assistance Program (IAP)	\$ -	\$ 2,528.77	\$ (2,528.77)
Leprino Grant	\$ -	\$ 5,000.00	\$ (5,000.00)
Weber Memorial	\$ -	\$ 740.00	\$ (740.00)
Website	\$ 137.97	\$ 16.99	\$ 120.98
TOTAL Designated Expense	\$ 9,766.47	\$ 22,069.05	\$ (12,302.58)
Fundraising Expense			
Chicken BBQ & Sale	\$ 411.74	\$ 430.56	\$ (18.82)
SleepOut	\$ 194.11	\$ 400.33	\$ 206.22
TOTAL Fundraising Expense	\$ 605.85	\$ 830.89	\$ (225.04)
Office-Administrative			
Bank Fees	\$ 12.00	\$ 59.50	\$ (47.50)
Box.net fee	\$ 300.00	\$ 300.00	\$ -
Clothes Closet			
Electricity for Clothes Closet	\$ 714.67	\$ 814.48	\$ (99.81)
TOTAL Clothes Closet	\$ 714.67	\$ 814.48	\$ (99.81)

2018 Annual Treasurer's Report
Income/Expense Comparison

	2017	2018	Difference
Helping Hands Furniture			
Electricity for Warehouse	\$ 537.54	\$ 509.06	\$ 28.48
Liability Insurance	\$ 941.31	\$ 941.31	\$ -
Mileage Reimbursement	\$ 1,478.75	\$ 549.25	\$ 929.50
Miscellaneous	\$ 631.80	\$ 212.54	\$ 419.26
Phone	\$ 42.08	\$ -	\$ 42.08
Trash Pick Up	\$ 181.44	\$ 182.07	\$ (0.63)
Water & Sewer	\$ 114.54	\$ 152.72	\$ (38.18)
TOTAL Helping Hands	\$ 3,927.46	\$ 2,546.95	\$ 1,380.51
Dues		\$ 75.00	\$ (75.00)
Educational Material		\$ 168.74	\$ (168.74)
Miscellaneous	\$ 614.69	\$ -	\$ 614.69
Mobile Food Pantry	\$ -	\$ 100.68	\$ (100.68)
P.O. Box Fee	\$ 88.00	\$ 94.00	\$ (6.00)
PayPal Fees	\$ 94.00	\$ 94.83	\$ (0.83)
Postage	\$ 213.65	\$ 197.50	\$ 16.15
Supplies	\$ 484.89	\$ 135.76	\$ 349.13
Telephone, Clearinghouse	\$ 973.29	\$ 962.44	\$ 10.85
Website Charges Mthly & Annual	\$ -	\$ 120.98	\$ (120.98)
TOTAL Office-Administrative	\$ 7,422.65	\$ 5,670.86	\$ 1,751.79
Pass Through Expense			
Kids at Risk	\$ 200.00	\$ -	\$ 200.00
TOTAL Pass Through Expense	\$ 200.00	\$ -	\$ 200.00
Catastrophic Assistance	\$ -	\$ 6,991.00	
Voucher Expenses			
Electricity	\$ 17,425.85	\$ 19,190.91	\$ (1,765.06)
Fuel	\$ 10,032.35	\$ 16,456.22	\$ (6,423.87)
Gasoline, Diesel	\$ 98.06	\$ (53.06)	\$ 151.12
Lodging	\$ 32.70	\$ 117.00	\$ (84.30)
Natural Gas	\$ -	\$ 2,049.90	\$ (2,049.90)
Prescription & Medical	\$ -	\$ 141.00	\$ (141.00)
Rent	\$ 19,827.50	\$ 17,997.53	\$ 1,829.97
Security Deposit	\$ 19,200.00	\$ 15,576.00	\$ 3,624.00
Sewer	\$ 1,200.00	\$ 570.00	\$ 630.00
Transportation	\$ 343.50	\$ -	\$ 343.50
Water	\$ 2,845.66	\$ 831.11	\$ 2,014.55
TOTAL Voucher Expenses	\$ 71,005.62	\$ 72,876.61	\$ (1,870.99)
TOTAL EXPENSES	\$ 89,000.59	\$ 108,438.41	\$ (19,437.82)
OVERALL TOTAL	\$ 161,222.46	\$ 30,768.42	\$ (130,454.04)

Respectfully submitted,
Richard Russell, Treasurer

Financial Secretary



In 2018, there were 19 new individual donors and 11 new business donors. A total of 57 year-end receipts were distributed to individuals, organizations and businesses for gifts of \$250 or more as well as receipts sent to our member churches. Along with the receipts, the insert below was included with highlights from the year along with information on how to donate using AmazonSmile. Donarius software was used to track donations through the year and generate the year-end statements.

Respectfully submitted,

Kim Paul, Financial Secretary



Thank you for your contribution(s) in 2018 which enabled us to help those in need in our community! Specifically, with your generous support and our volunteers we:

- Provided over \$73,000 in 285 **vouchers** for basic needs of electric (74), fuel (69), rent (67), security deposit (59), water/sewer (9), and other emergency needs (7) thereby helping 396 adults & 271 children.
- Served 2,007 households in our **Clothes Closet** ministry giving out 32,127 free items of clothing & apparel, small housewares, books & toys.
- Assisted 132 households through our **Helping Hands** ministry with furniture and appliances made possible by 203 donations.
- Provided 1,413 households representing 3,774 people with emergency food through the ministry of the **Valley Food Pantry**.
- Provided 1,605 households representing 3,947 people with 35,523 meals through the **Mobile Food Pantry**.
- Served a total of 951 students through our **Kids at Risk** program in the school districts of Athens, Sayre, & Waverly with clothing, hygiene items, school supplies, and other needs anonymously by partnering with school personnel.
- Provided assistance to 6 households through our **Interim Assistance** and **Catastrophic Assistance Programs**.

The Bridge of the Penn-York Valley Churches
570-888-8826 P.O. Box 202, Sayre, PA 18840 www.thevalleybridge.org

Questions about your statement?
Contact Kim Paul, 570-867-2628
financialsecretary@thevalleybridge.org



Looking for another way to support **The Bridge of the Penn-York Valley Churches**? Here is a quick, easy way to do so without spending a penny!

When shopping online, use AmazonSmile (smile.amazon.com), a simple and automatic way for you to support **The Bridge** every time you shop at no cost to you. And it has all your Amazon.com history!

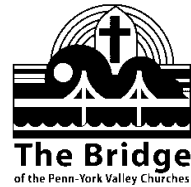
- Amazon donates 0.5% of the price of your eligible AmazonSmile purchases to the charitable organization of your choice.
- AmazonSmile is the same Amazon you know. Same products, same prices, same service.
- Support **The Bridge** by starting your shopping at smile.amazon.com

Register at smile.amazon.com and select "**The Bridge of the Penn-York Valley Churches**" as your charitable organization. It's that easy!



*Whoever is generous to the poor lends to the LORD,
and he will repay him for his deed.
Proverbs 19:17*

Corresponding Secretary



The Bridge of the Penn-York Valley Churches continues to exist and function providing a needed helping hand to Valley families in desperate circumstances because of the kind and generous hearts of member churches, community individuals, generous businesses and benevolent organizations. The Lord himself has prompted many to be this blessing. Their gestures reflect this scripture text from Psalm 22:23a, 24 which states: "Praise the Lord, all you who fear him! Honor him! For he has not ignored the suffering of the needy. He has not turned and walked away. He has listened to their cries for help."

So many have stepped forward in love of their neighbors and love for God. Well done Valley friends of *The Bridge*! What follows reflects their efforts.

Churches:	99
Individuals and Organizations:	176

It should be noted that some donors requested, "No thank you necessary." Also, in addition to acknowledging donations as listed above, various cards of appreciation were sent.

Special thanks to my husband, Nelson Kopatz, for his computer assistance with printing of the letters and envelopes and to Sherry Pinkard and Richard Russell for keeping the stats of donations and passing them on to us so we can properly thank friends for their gifts of help.

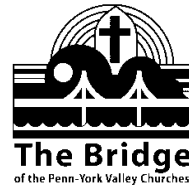
Thank you,
Sue Kopatz, Corresponding Secretary



*Whoever gives to the poor will not want,
but he who hides his eyes will get many a curse.*

Proverbs 28:27

Audit Committee



The Audit Committee completed an audit of The Bridge's 2018 financial records, including the following accounts: The Main Bridge account, Kids at Risk, Valley Food Pantry, and Financial Secretary. Upon review, the financial records and reports were found to be accurate and reconciled.

The committee would like to thank those involved with maintaining the financial records throughout the year – Rich Russell, Main Bridge Treasurer; Cindy Jones, Kids at Risk; Marion Dabroski, Valley Food Pantry; and Kim Paul, Financial Secretary.

Respectfully submitted,

2018 Audit Committee: Rick Felt, Wendy McKeithan, Don Jayne

2018 Leadership

Officers:

President: **Marilyn Weber**, Athens United Methodist Church

Vice President: **Kim Paul**, North Waverly Chapel

Secretary: **Meghan Miller**, Chemung Christian Fellowship (first part of the year); **Kim Paul**, North Waverly Chapel (second part of the year as Acting Secretary)

Treasurer: **Richard Russell**, Crossroads Family Ministries

Other Leadership:

Pastoral Advisor: **Joshua Householder**, Athens Wesleyan Church

Corresponding Secretary: **Sue Kopatz**, Valley United Presbyterian Church

Assistant Treasurer: **Sherry Pinkard**, Valley United Presbyterian Church

Financial Secretary: **Kim Paul**, North Waverly Chapel

Clearinghouse Coordinator: **Larry Day**, North Waverly Chapel

Voucher Writer Trainer: **Larry Day**, North Waverly Chapel

Catastrophic Coordinators: **Don Jayne**, Valley United Presbyterian Church, **Kim Paul**, North Waverly Chapel, **Marsha Zwierlein**, Epiphany Parish

Interim Assistance Coordinator: **Kim Paul**, North Waverly Chapel

Clothes Closet Coordinator: **Kim Paul**, North Waverly Chapel

Helping Hands Coordinator: **Marilyn Weber**, Athens United Methodist Church

Kids at Risk Coordinator: **Cindy Jones**, Athens United Methodist Church

Community Dinners Coordinator: **Sandy Campbell**, Valley United Presbyterian Church

Mobile Food Pantry, Waverly, Site Coordinators: **Kim Paul**, North Waverly Chapel & **Don Jayne**, Valley United Presbyterian Church

Facebook: **Marilyn Weber**, Athens United Methodist Church

Webmaster: **Kim Paul**, North Waverly Chapel

Historian: **Kim Paul**, North Waverly Chapel

The Bridge of the Penn-York Valley Churches

570-888-8826 P.O. Box 202, Sayre, PA 18840

www.thevalleybridge.org