

annual report

2021

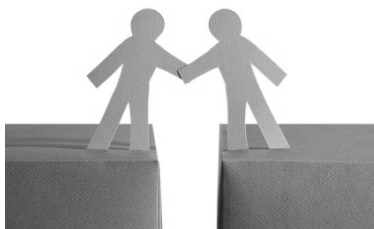


# The Bridge of the Penn-York Valley Churches

March 2022

P.O. Box 202  
Sayre, PA 18840  
570-888-8826

[www.thevalleybridge.org](http://www.thevalleybridge.org)



*Bridging the gaps of life in the name of Jesus Christ*

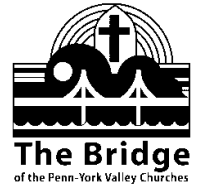
*Whoever oppresses a poor man insults his Maker,  
but he who is generous to the needy honors him.*

Proverbs 14:31

# contents

About Us .....	4
President's Letter .....	5
2021 Highlights.....	6
Clearinghouse .....	7
Clothes Closet .....	8
Helping Hands .....	9
Brick Dedication .....	10
Kids at Risk .....	11
Mobile Food Pantry .....	12
Valley Food Pantry.....	13
Faith & Finances.....	14
Interim Assistance Program (IAP).....	15
COVID-19 Additional Assistance .....	15
Fundraisers .....	16-17
Financial Report .....	18-21
Financial Secretary .....	22
Audit Committee Report.....	23
2021 Leadership Team.....	23

# About Us



*The Bridge of the Penn-York Valley Churches* is an all-volunteer, non-profit organization of churches in the Penn-York Valley that serves the residents in the Waverly, Sayre, and Athens school districts. The aim of *The Bridge* is to bridge the gaps of life in the name of Jesus Christ and to help when and where other assistance is lacking.

Specifically, the ministries of *The Bridge* in 2021 included offering voucher assistance for emergency needs, especially housing related needs; catastrophic assistance; interim assistance; free furniture and household goods through *Helping Hands*; free clothing, household goods, toys and books through the *Clothes Closet*; clothing, hygiene items, school supplies and other assistance through *Kids at Risk*; food assistance through the *Mobile Food Pantry* and *The Valley Food Pantry*; financial coaching through *Faith & Finances*; and referrals to our and other services through our *Clearinghouse*.

*The Bridge* is supported by its member churches, individuals, The United Way, businesses, and community organizations. *The Bridge* holds two major fundraising events each year: the Sleepout in November and the Chicken Barbeque and Vintage Furniture Sale held in September. Thankfully, we were able to hold both in 2021 and both were very successful. The Board of Directors of *The Bridge* generally meets monthly on the second Thursday of each month taking a month or 2 off in the summer.

We are so very thankful for all those who participate in the ministry—donors and volunteers alike! We continue to seek God's direction as we serve in the ministry.

## Our Member Churches and Partners in 2021

Athens United Methodist Church  
Athens Wesleyan Church  
Bentley Creek Wesleyan Church  
Blessed Trinity at St. James  
Chemung Christian Fellowship  
Christian & Missionary Alliance, Waverly  
Christian Life Church  
Church of the Redeemer  
Crossroads Family Ministries  
Epiphany Parish  
Encounter Church  
Federated Church, East Smithfield  
First Baptist Church, Sayre  
First Baptist Church, Waverly  
First Church of God, Sayre  
Greater Valley Assembly of God

Litchfield United Methodist Church  
North Waverly Chapel  
St. John Lutheran Church  
Sayre Christian Church  
Seventh Day Adventist Church  
The Salvation Army  
Trinity Episcopal Church  
Valley United Presbyterian Church  
Waverly United Methodist Church

### Partners:

Catholic Charities, Tioga Outreach  
Robert Packer Hospital Chaplain  
Tioga Rural Ministries

*Serving those in need since 1987*

# President's Letter



Greetings! Two thousand twenty-one continued to provide a unique and challenging time for all of us individually and collectively, including the ministry of *The Bridge*. As I have said before, none of it comes as a surprise to God and we can be confident and rest in him that he is all-knowing and will continue to hold us in the palm of his hand guiding, directing, and supplying all of our needs.

Despite challenges, I am very pleased to report we have continued to provide vital assistance to those in need in our community due to the faithfulness of God through our all-volunteer workforce and a number of exciting things happened in 2021!

One very unexpected surprise was being awarded one of the November Southern Tier Tuesday Grants for \$2,000 funded by Adam Weitsman, owner of Upstate Shredding, and his daughter, Clover after being nominated by an individual previously helped by *The Bridge*. We were selected as a finalist from over 200 non-profits nominated and then were one of five to receive a grant based on votes from the community. Along with receiving the grant, **Cindy Jones** and I had the opportunity to be interviewed live on the news segment *Around the Tiers* on WBNG Channel 12 News.



Another of God's blessings in 2021, was the provision of much needed additional space for Helping Hands, Valley Food Pantry, and meeting/office space at Christian Life Church. This has proved to be a tremendous asset to the ministry.

Further, after many, many years of searching for database software to track assistance given to clients to replace our overburdened and fragile Excel spreadsheet, we found an affordable solution, Apricot. Implementation of the database after months of work is planned for January. The software will also be used for volunteers/member churches and donor depositing and receipting as well.

As we look to the future, I am hopeful that we can continue moving forward as God directs and in His timing. Some areas I hope to focus on in 2022 include recruiting volunteers for various open positions according to God's gifting and leading; considering restructuring options for the ministry; implementing Apricot for tracking client, donor, and member/volunteer information; considering/implementing an eldercare ministry; and pursuing our dream of locating a building to house all of our ministries under one roof.

I continue to be amazed and so very thankful for the talented and dedicated volunteers who give so willingly all through the year. Their dedication and contribution of countless hours demonstrates their love for God, people, and the ministries of *The Bridge*. It also allows us to continue as an all-volunteer organization.

A special thank you to our member churches, individuals, businesses, and organizations in our community (and outside as well!) for their support of *The Bridge* through generous contributions, prayer and support of our fundraisers. We look forward to seeing how God will use *The Bridge* in the coming year. Please continue to keep *The Bridge* in prayer.

It is my hope that you will take a few moments to read our Annual Report and see what God has accomplished through the ministry in 2021.

**Kim Paul,**  
President

# 2021 Highlights



**Southern Tier Tuesdays Grant** was awarded to The Bridge in November totalling \$2,000. In addition to the grant, we had the opportunity to be interviewed live as part of Around the Tiers on WBNG Channel 12 News.

**Overflow/Meeting/Office Space at Christian Life Church** became available to The Bridge in July providing much needed space for the ministry.

**Ministry PowerPoint** - A PowerPoint presentation of the ministry was developed and made available to share the ministry with member church congregations and the community as well as adapting it for the website. It has proved to be helpful in sharing the ministry in a variety of settings.

**Valley Food Pantry** became a Food Bank of the Southern Tier partner pantry in 2021 allowing free and reduced cost food. The pantry served 367 households representing 1,065 adults and 551 children for a total of 985 people served. Hours continue to be limited to two hours on weekdays with a modified process of providing food at the door.

**COVID-19 Additional Assistance** continued in 2021 (started in October 2020). A total of 20 vouchers were issued in 2021 totalling \$5,908.41.

**Vouchers** were given to 98 households for almost \$34,000 to assist with security deposit (24), fuel oil/natural gas (20), rent (27), electric (16), water/sewer (7), and other emergency needs (3) thereby helping 147 adults and 108 children.

**Interim Assistance Program** completed its first full year as a permanent part of the ministry. One case was started and was still open at the end of 2021.

**Faith & Finances**, a 12-week Biblically-based program providing an effective way to gain skills to manage money and relationships, was offered for the second time in 2021.

**Clothes Closet** served 343 households giving out 8,134 free items of clothing, small housewares, books, and toys. The Clothes Closet has continued to operate by appointment during regular hours since it reopened in August 2020.

**Helping Hands** assisted 80 households with furniture and appliances made possible by 341 donations. Helping Hands has required appointments for clients with vouchers for furniture since July 2020.

**Kids at Risk** anonymously served a total of 1,044 students in the school districts of Athens, Sayre, and Waverly with clothing, hygiene items, school supplies, and other needs by partnering with school personnel who identified needs and distributed items.

**Mobile Food Pantry** provided food to 175-200 households each month through the Waverly Mobile Food Pantry. In October, the distribution was changed to a "Drop and Go" where the food is delivered and the truck leaves while our volunteers handle the distribution of the food.

**Annual Sleepout** was a huge success raising \$17,204 as was the **Chicken BBQ & Vintage Sale** clearing \$4,096.51.

# Clearinghouse



The Clearinghouse serves as an access point for *The Bridge's* services by responding to inquiries regarding *The Bridge* and its services. If applicable, individuals seeking financial assistance or furniture are directed to a member church voucher writer to complete an application and receive a *Bridge* voucher if they are eligible. Household income, number of people in the household, frequency of requests, and residence (Sayre, Athens or Waverly school district) determine eligibility. Referral is made to other organizations when *The Bridge* is not able to help and when additional help is needed.



We had an unusual year for Clearinghouse coverage in 2021. **Judy Croft** continued faithfully as Clearinghouse Coordinator through June when she retired from the position and was followed by **Mitchell Ramsey** who covered the summer until the second week in September when **Gail Williams** took the position. Due to illness, Gail was not able to serve for over two months. **Stacie Robinson** our back-up coordinator was able to help out as was I for a couple weeks each, but the bulk of the coverage was provided by **Rich** and **Pam Russell**. We are greatly appreciative for Rich and Pam's willingness and diligence in learning and doing this critical function on top of their already loaded schedules and responsibilities! We are looking forward to a more stable year as Gail is back in the saddle again!

In 2021, a total of 98 regular vouchers were issued. They were for security deposits (24), rent (27), fuel oil/natural gas (20), electric (16) water/sewer (7), and miscellaneous (3) helping 147 adults and 108 children. Twenty COVID-19 Additional Assistance vouchers were also issued.

Three new voucher writers were trained in 2021: **Pastor Robert Nacci, Mitchell Ramsey**, and **Patrick Aquilio**. Voucher writers remain at the heart of our cash assistance program. We are so thankful for each and every one. I would be remiss though if I didn't say a special thank you to **Sayre Christian Church**, specifically **Wendy McKeithan, Pastor Paula Kraus**, and **Oliver McKeithan** for going above and beyond through the pandemic doing vouchers in person and by phone when others have not been able/available and handling some of our more challenging cases.

Respectfully submitted,

**Kim Paul**

## Clearinghouse Hours

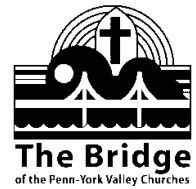
Monday 9 am – 12:30 pm  
Tuesday 1 pm – 3 pm  
Wednesday 9 am – 12:30 pm  
Thursday 9 am – 11:30 am

570-888-8826

[clearinghouse@thevalleybridge.org](mailto:clearinghouse@thevalleybridge.org)



# Clothes Closet



The Clothes Closet is a ministry of *The Bridge* located at the North Waverly Chapel which provides clothing and apparel, small household items, and toys to those in need without requiring a voucher and with no geographical restrictions. Individuals and families find out about the ministry through voucher writers, churches, friends, medical personnel, and the media. The ministry relies entirely upon donations from generous individuals and businesses in the community.

The Clothes Closet has continued to operate twice a week, Tuesdays from 6:30 pm to 8:30 pm and Wednesdays from 12 noon to 2 pm in 2021 serving those in need by appointment by calling 607-426-6895 for a half hour time slot. In 2021, a total of 343 households were served with 8,134 items distributed. A special thank you to **Pam Russell** who has been handling the scheduling for the Clothes Closet. She has been a tremendous asset.



This year we were able to maximize the utilization of our downstairs storage space with the donation of 7 shelving units from Sam's Club. This has made it possible to organize the items that are used to restock the area open to the public. We were also able to improve the storage space in our overflow room in the church by adding shelves provided by **Helping Hands**.

None of this would be possible without the generosity of the **North Waverly Chapel** allowing the use of the space for the Clothes Closet without charge and those who so generously donate items, and the numerous volunteers. We have teams who work when we are open to the public and teams who work when we are not to restock and sort donations led by **Cathy Moliski** and **Marie Wheeler**. We are so very thankful for all God is doing in and through the ministry of the Clothes Closet.



Respectfully submitted,  
**Kim Paul**, Clothes Closet Coordinator





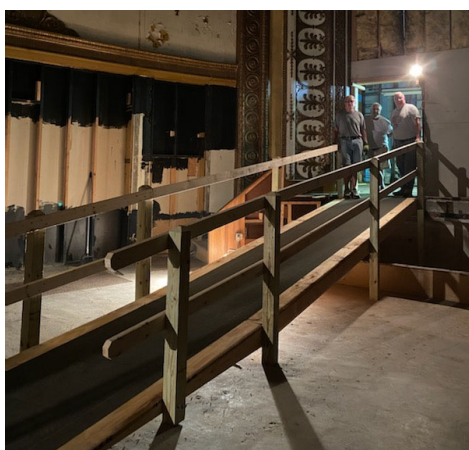
# Helping Hands

The Helping Hands Ministry continues to be located in the old Quinlan's Park building at 515 Chemung Street, Waverly, New York.

We started the year 2021 the same as we ended 2020 with a full warehouse serving our clients by appointment to look at furniture wearing masks and we continued that through the year. We fulfilled 80 vouchers and had 341 donations for a total of 421 calls.



In April, we met at the Sayre Theatre for a brick dedication honoring **Marilyn Weber**, previous Helping Hands Coordinator and President of The Bridge who passed away July 17, 2020.



In July of 2021, we started moving furniture into our new overflow storage space at Christian Life Church and quickly learned we would need to have a ramp built to make storing furniture there easier. So, in August, we built a ramp with the help of Hezekiah's Hands. At the end of August and into September, we moved a lot of furniture into storage to make room for the chicken barbecue.

On Saturday, September 25, we held our annual Chicken Barbeque and Vintage Sale. Instead of taking furniture outside, we sold furniture inside of the building which made it a lot easier for the volunteers.

In November, we set up the Sleepout building for the Sleepout.

Many thanks go to all the volunteers for their dedicated service throughout the year. Also, a huge thank you to our Valley for all the donations during the year without which we would not be able to operate.

Respectfully submitted,  
**Bob Ward**, Helping Hands Coordinator

# Brick Dedication

## Marilyn Weber and Don Jayne

Two faithful volunteers for *The Bridge* were honored this summer with a brick in front of the Sayre Theatre where we have honored other volunteers previously.

**Marilyn Weber** began volunteering with *The Bridge* in September 2011 during *The Bridge's* flood relief efforts. She quickly became a faithful volunteer giving huge amounts of time helping with the expanded Clothes Closet at the North Waverly Chapel and helping to tackle the donations from the Valley Rally that filled the basement of St.

John's Catholic Church and overflowed into the Helping Hands Warehouse. While at the warehouse, she naturally became "one of the guys" and five years later became the Coordinator of Helping Hands. It wasn't long before she became President in



2017 and remained so until her passing on July 13, 2020 at the age of 55. She was at the Helping Hands warehouse the day before her passing as she wanted to see it reopen after being closed because of COVID. Her husband, **CT Weber**, the **Helping Hands** team, and Kim Paul were present for her brick dedication this summer.



**Don Jayne** was active with *The Bridge* in many capacities over the years most notably as Vice President (2003-2005, 2012-2013) and President (2006-2009); however, he was always a strong supporter even when he didn't hold an elected position. Most recently, before his passing on October 20, 2019 at the age of 80 after a 2-year battle with cancer, he regularly helped with the Mobile Food Pantry. His wife of 35 years was present when the brick was dedicated as well as their pastor, Pastor Sharan Knoell.





# Kids at Risk



Kids at Risk is now in our 28<sup>th</sup> year of ministry within *The Bridge*. With schools open throughout this past year, we were once again busy providing items for our area students. School nurses, secretaries and counselors in the Athens, Sayre and Waverly school districts continue to keep an eye out for students in need; they contact Kids at Risk when there is a need for items such as shoes, boots, coats, shirts, pants, socks, underwear; hygiene items, and services such as eye exams or glasses. We are very appreciative of the generous donations we received this year from local churches, businesses, organizations and individuals.



Items collected by the Athens UMC during the Sleepout.

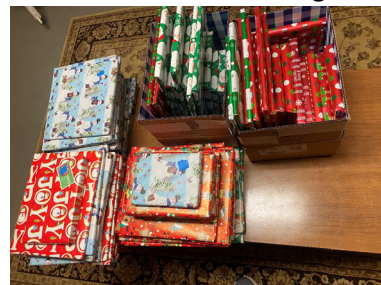
We did not have the school district challenge during the Sleepout this year however we invited area churches to donate clothing and they kindly gave over 250 items.

We again worked with the Athens Spaulding Library to provide books for students who would benefit from a book at Christmas within the three school districts.

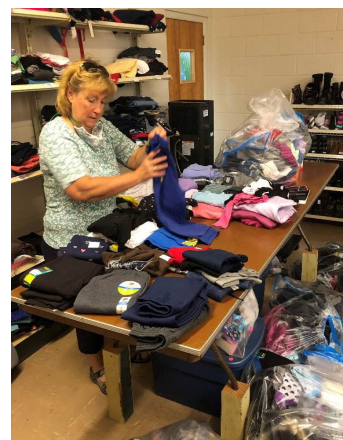
The mission of Kids at Risk is to provide needed items such as clothing, school supplies, hygiene

articles and services to students who may be in uncomfortable or unhealthy situations in an attempt to help them be more successful in school, and achieve a higher level of self-esteem.

In 2021, Kids at Risk helped 1,044 students (445 Athens, 214 Sayre, 385 Waverly). The beginning balance in checking was \$2,144.52 and the ending balance was \$1,058.34. The beginning balance in the investment account was \$11,086.73 and the ending balance was \$9,017.42. Although our daily lives are still being affected by COVID, children are going to school, and Kids at Risk is available to meet identified needs of these children, thanks to the compassionate giving of our Valley.



Books wrapped and ready to be delivered to the area elementary schools.



Sorting and preparing Back to School clothes supplies.

	Beginning	Income	Expense	Transfer	Ending
Checking	\$2,144.52	\$2,387.47	\$5,673.65	\$2,200	\$1,058.34
Savings	\$11,086.73	\$130.69	\$0	(\$2,200)	\$9,017.42
Total	\$13,231.25	\$2,518.16	\$5,673.65	\$0	\$10,075.76

Respectfully submitted,

**Cindy Jones**, Kids at Risk Coordinator

# Mobile Food Pantry



The Mobile Food Pantry continued through 2021 on the third Wednesday of each month from 10a-11a operating as a drive-thru serving 175-200 households each month. Clients register the day before the mobile online or by calling 800-901-2180. Half are given one time to arrive and the other half another time to arrive about a half hour apart.

Starting in October, the distribution changed to what the Food Bank of the Southern Tier refers to as a "Drop and Go"

Mobile Food Pantry. They provided us with some of the equipment necessary to do the distribution (tables, traffic cones, vests, cooler blankets, etc.) which we store between distributions and they come, drop off the food and leave. We distribute the food and put everything away, taking care of the remaining trash and cardboard as well as stacking the pallets for pick up the next day.

We require 25-30 volunteers for each distribution. There are a variety of jobs needed including people to take phone reservations the day before the event, directing traffic and parking, checking people in, setting up, preparing food to be loaded into vehicles, loading vehicles, and clean-up. We have very faithful volunteers who make it all possible! With the change to the Drop and Go, we are especially grateful for the

additional help from the **Helping Hands** ministry for recycling the cardboard for us and being willing to manage the pallets for us if needed and **Laura Hoppe** for taking care of the trash for us.

In addition, we are very grateful for the graciousness and hospitality of the **North**

**Waverly Chapel** for allowing the distributions to take place on their property as well as allowing us to use space in their facility to store the equipment provided for the mobile. What a blessing!

It has been our privilege to serve God and the people in this community through the ministry of the Mobile Food Pantry in 2021.

Respectfully submitted,

**Kim Paul**, MFP Site Coordinator



# Valley Food Pantry



The Valley Food Pantry, located at 418 Waverly St., (at the rear of the parking lot between Smith Bros. Insurance and Con Star Garage), provides a three-day supply of food once a month for families and individuals in need. Hours of operation in 2021 have been Monday, Tuesday, Thursday and Friday 10 am - noon and Wednesday 2 pm - 4 pm due to COVID-19 with clients being served at the door.

This year there were two exciting changes. As of July, we have overflow space available to us at Christian Life Church where we have a room with shelves as well as a refrigerator and a freezer for extra food. In addition, in October, we became a partner food pantry with the Food Bank of the Southern Tier. This partnership allows us to obtain free and reduced cost food from the Food Bank allowing us to give more food while keeping our costs low. It will also allow for more variety of food based on what is available at the Food Bank.

We are very thankful for our faithful volunteers who donate time and energy and the many churches, businesses, organizations, and individuals who donate food and money to keep the ministry going. We are also grateful to **Bill Soprano** of the insurance agency who provides space for our operation free of charge.

## 2021 Activity

2021	PA	NY	TOTAL
Households	174	193	367
Adults	377	325	702
Children	168	115	283
<b>Total Helped</b>	<b>545</b>	<b>440</b>	<b>985</b>

	Beginning	Income	Expense	Transfer*	Ending
Checking	\$20,417.80	\$25,163.60	\$2,502.89	(20,000.00)	\$23,078.51
Savings	\$42,095.42	\$843.00	\$0.00	\$20,000.00	\$62,938.42
Total	\$62,513.22	\$26,006.60	\$2,502.89	\$0.00	\$86,016.93

Respectfully submitted,

**Elizabeth Cocco**

Coordinator, Valley Food Pantry

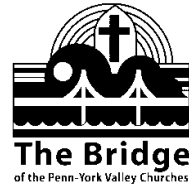
**Howard Brewster**

Assistant Coordinator, Valley Food Pantry

*Financial donations for the Valley Food Pantry should now be sent to our new post office box at:*

PO Box 27, Waverly, NY 14892.

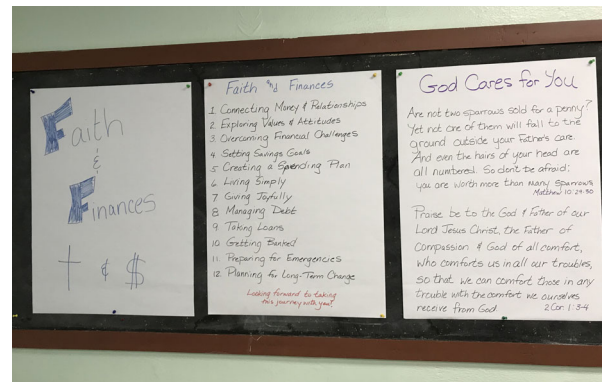
# Faith & Finances



Faith and Finances is a program developed by the Chambers Center with a target audience of financially vulnerable adults with limited financial training and a high school education. The typical target participant has personal debt, no emergency fund, doesn't live within budget, has a net worth near or below zero, and range from non-believers to mature Christians.

There are 12 weekly sessions 90 minutes each with a meal preceding. The facilitated sessions encourage interaction and discussion and include the following topics:

1. Connecting Money & Relationships
2. Exploring Values & Attitudes
3. Overcoming Financial Challenges
4. Setting Savings Goals
5. Creating a Spending Plan
6. Living Simply
7. Giving Joyfully
8. Managing Debt
9. Taking Loans
10. Getting Banked
11. Preparing for Emergencies
12. Planning for Long-Term Change



Facilitators of the program are required to complete a training program. In 2021, **Jamie Levering** completed the facilitator training to join **Marion Dabroski** and **Kim Paul** who completed training previously. The second session of the program was offered from September – November at Christian Life Church. We are looking forward to future offerings.

A special thank you to the individuals and member churches that provided meals for the sessions as they are an important part of the program facilitating relationship building.





# Interim Assistance Program



This assistance is aimed at helping individuals or families who have experienced a significant event, causing a short-term need that requires more than our regular assistance provides, up to \$1,500 each. It is only permitted to be used once and given over a period of 3-6 months. Once approved for the program, clients are partnered with a member church by the Interim Assistance Coordinator. Goals are mutually determined and evaluated on a regular basis.

In 2021, one interim assistance case was started and the case is still open. We are hopeful to have additional cases in the future and to recruit some additional volunteers and churches to come alongside in the process.

## COVID-19 Additional Assistance

COVID-19 Additional Assistance was added to the help offered by *The Bridge* in October of 2020. It continued during 2021. This assistance provides up to an additional \$400 for those whose income is directly impacted by COVID-19 (such as a job loss or hours at a job being cut due to COVID-19) and as a result are having difficulty meeting basic needs such as those covered by our regular emergency assistance program (e.g., rent, utilities). Possible recipients must also meet the criteria for our regular vouchers (e.g., income guidelines, geographic location, shut-off notice, eviction notice). The 3-in-7 rule, which limits regular assistance to three times helped in 7 years, does not apply here.

Voucher writers meet with possible recipients and complete a regular Emergency Assistance Application as well as a COVID-19 Additional Assistance Application if deemed eligible. A total of \$25,000 was allotted for this assistance with additional funds being considered at a later time if necessary. In 2021, 20 vouchers were issued for a total of \$5,908.41.



# 2021 Fundraisers:

## Chicken BBQ & Vintage Sale

The 2021 Chicken BBQ & Vintage Sale was held on Saturday, September 25<sup>th</sup> and cleared over \$4,000! This year most of the items were displayed inside made possible with the new overflow space at Christian Life Church. The Rolling Dead motorcycle group again managed the chicken part of the sale. Many thanks to all those who participated in making the event a success!





## 19<sup>th</sup> Annual Sleepout

The Sleepout is *The Bridge's* main fundraiser. It aims to bring awareness to those in need, to explain how the Bridge meets those needs, and to raise funds for the ministry. The 19<sup>th</sup> Annual Sleepout was held on Friday, November 26 at 3pm through Saturday, November 27 at 3pm in the parking lot of the Sayre Guthrie Desmond Street Practice. It was a huge success raising \$17,204, which exceeded the \$15,000 goal!

The Sleepout Team in 2021 consisted of **Wendy McKeithan, Jamie Levering,** and **Kim Paul.** The **Helping Hands** crew managed the building and tearing down of the Sleepout "house." Those sleeping out were very thankful for the shelter, including the roof!

We were interviewed for the newspapers and TV during the event and then were invited to WETM Channel 18 in Elmira for a follow-up live interview after the event.

## The Bridge Annual Sleepout 24-hour Fundraiser



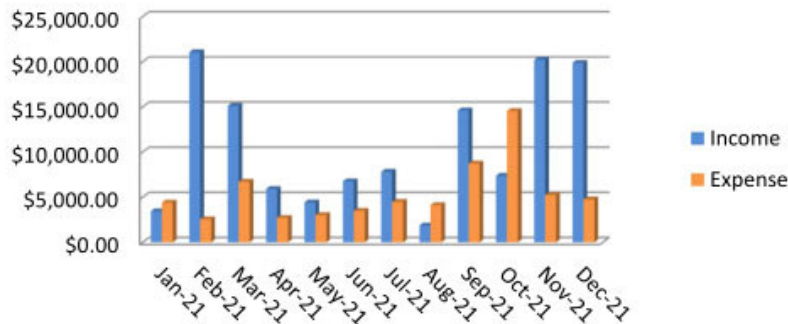
**\$15,000 Goal Exceeded!**

**Many thanks to all who participated!**



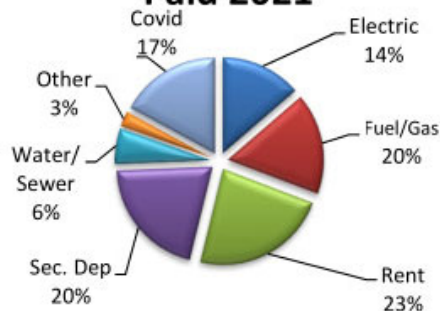
## The Bridge of the Penn-York Valley Churches 2021 Treasurer's Annual Report

### 2021 Income and Expenses



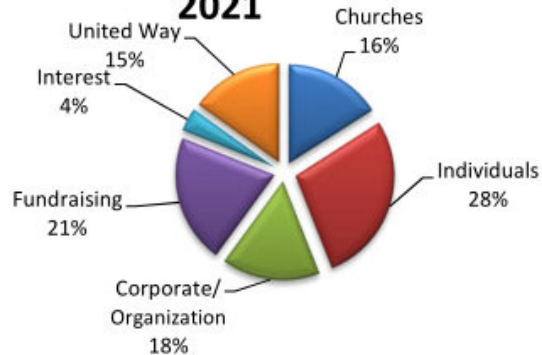
### Types of Vouchers

#### Paid 2021



### Funding Sources

#### 2021



Account	Beginning Balance	Income	Expense	Transfers *	Balance
Bridge Account	\$ 89,025.25	\$ 128,496.19	\$ (64,613.27)	\$ (50,000.00)	\$ 102,908.17
Bridge Savings Account	\$ 297,952.74	\$ 5,009.05	\$ -	\$ 50,000.00	\$ 352,961.79
<b>Total Bridge Funds</b>	<b>\$ 386,977.99</b>	<b>\$ 133,505.24</b>	<b>\$ (64,613.27)</b>	<b>\$ -</b>	<b>\$ 455,869.96</b>

\*Transfer includes \$2,383.08 to Valley Food Pantry and \$2,383.08 to Kids at Risk for 2020 Sleepout.

#### Designated Funds within Bridge Account

Operational Reserve Fund	\$ 100,000.00	\$ -	\$ -	\$ -	\$ 100,000.00
Helping Hands Warehouse	\$ 800.00	\$ 9,600.00	\$ (9,600.00)	\$ -	\$ 800.00
Weber Memorial	\$ 260.00	\$ -	\$ -	\$ -	\$ 260.00
Ministry Improvements	\$ -	\$ 1,000.00	\$ (513.96)	\$ -	\$ 486.04
Beulah Merrill Estate	\$ 130,693.33	\$ -	\$ (8,177.02)	\$ 15.00	\$ 122,531.31
<b>Total Designated Funds</b>	<b>\$ 231,753.33</b>	<b>\$ 10,600.00</b>	<b>\$ (18,290.98)</b>	<b>\$ 15.00</b>	<b>\$ 224,077.35</b>
<b>Total Undesignated Funds</b>	<b>\$ 155,224.66</b>	<b>\$ 122,905.24</b>	<b>\$ (46,322.29)</b>	<b>\$ (15.00)</b>	<b>\$ 231,792.61</b>

\*Client refund from Faith & Finances asked to be given to education

Income and Expense Comparison 2020-2021				
	2020	2021	Difference	
Income	\$ 107,090.52	\$ 133,505.24	\$	26,414.72
Expense	\$ 92,265.79	\$ 64,613.27	\$	(27,652.52)
Difference	\$ 14,824.73	\$ 68,891.97	\$	54,067.24

A total of 98 vouchers were paid in 2021 assisting 147 adults and 108 children. In addition 20 COVID vouchers were issued.

## 2021 Bridge Budget Report

Category	1/1/2021 Actual	- Budget	12/31/2021 Difference
<b>INCOME</b>	<b>133,505.24</b>	<b>112,999.98</b>	<b>20,505.26</b>
Churches	<b>21,309.00</b>	<b>16,000.00</b>	<b>5,309.00</b>
Athens Wesleyan	50.00	0.00	50.00
Bentley Creek Wesleyan Church	1,000.00	0.00	1,000.00
Blessed Trinity Parish (St. James)	2,115.00	0.00	2,115.00
Chemung Christian Fellowship	2,400.00	0.00	2,400.00
Christian Life	550.00	0.00	550.00
Church of God	400.00	0.00	400.00
CMA, Waverly	40.00	0.00	40.00
Crossroads Family Ministries (Keyst...	674.00	0.00	674.00
E Smithfield Federated	150.00	0.00	150.00
Encounter Free Methodist	1,250.00	0.00	1,250.00
First Baptist, Waverly	250.00	0.00	250.00
G.V. Assembly of God	1,200.00	0.00	1,200.00
North Waverly Chapel	900.00	0.00	900.00
Redeemer	450.00	0.00	450.00
St. John Lutheran	1,520.00	0.00	1,520.00
UMC, Athens	3,285.00	0.00	3,285.00
UMC, Waverly	75.00	0.00	75.00
Valley United Presbyterian	5,000.00	0.00	5,000.00
Community Chest	0.00	3,500.00	-3,500.00
Corporate-Organizational Gifts	10,830.00	10,000.00	830.00
Designated Income	<b>10,630.00</b>	<b>12,599.98</b>	<b>-1,969.98</b>
Education Program	30.00	0.00	30.00
Helping Hands Rent	9,600.00	9,600.00	0.00
Ministry Improvements	1,000.00	2,999.98	-1,999.98
Fundraising Income	<b>22,067.70</b>	<b>16,000.00</b>	<b>6,067.70</b>
Chicken BBQ & Sale	<b>4,863.70</b>	<b>6,000.00</b>	<b>-1,136.30</b>
BBQ Donations	10.50	0.00	10.50
BBQ Furniture Sale	2,994.20	0.00	2,994.20
Other Chicken BBQ & Sale	1,859.00	0.00	1,859.00
SleepOut	<b>17,204.00</b>	<b>10,000.00</b>	<b>7,204.00</b>
Cash	454.00	0.00	454.00
Churches	<b>400.00</b>	<b>0.00</b>	<b>400.00</b>
Sayre Christian	300.00	0.00	300.00
Corporate-Organization	14,280.00	0.00	14,280.00
Individual	2,070.00	0.00	2,070.00
Helping Hands Income	<b>5,961.00</b>	<b>2,500.00</b>	<b>3,461.00</b>
Delivery Fees	440.00	0.00	440.00
Furniture Sales	5,241.00	0.00	5,241.00
Scrap Metal	280.00	0.00	280.00
Individual Gifts	<b>37,260.10</b>	<b>25,000.00</b>	<b>12,260.10</b>
PayPal Deposit	4,947.99	0.00	4,947.99
Other Individual Gifts	32,312.11	0.00	32,312.11
Misc Income	<b>5,265.99</b>	<b>7,400.00</b>	<b>-2,134.01</b>
AmazonSmile	153.44	120.00	33.44
Checking Interest	103.50	250.00	-146.50
WIF Savings Interest	5,009.05	7,030.00	-2,020.95
Pass Through Income	<b>24.01</b>	<b>0.00</b>	<b>24.01</b>
Valley Food Pantry	24.01	0.00	24.01



# financial report 3

Category	1/1/2021 Actual	- Budget	12/31/2021 Difference
United Way of Bradford County	20,000.00	20,000.00	0.00
United Way of the Southern Tier	157.44	0.00	157.44
<b>EXPENSES</b>	<b>64,613.27</b>	<b>137,213.43</b>	<b>72,600.16</b>
Designated Expense	<b>18,290.98</b>	<b>17,825.00</b>	<b>-465.98</b>
Beulah Merrill Estate	<b>8,177.02</b>	<b>2,825.00</b>	<b>-5,352.02</b>
Database	8,107.30	0.00	-8,107.30
Education Program	<b>53.00</b>	<b>2,000.00</b>	<b>1,947.00</b>
Faith & Finances	53.00	2,000.00	1,947.00
Volunteer Appreciation	<b>16.72</b>	<b>825.00</b>	<b>808.28</b>
Clothes Closet	0.00	250.00	250.00
Dec Board Meeting	0.00	25.00	25.00
Helping Hands	0.00	150.00	150.00
Mobile Food Pantry	0.00	200.00	200.00
Voucher Writers	16.72	200.00	183.28
Helping Hands Rent	9,600.00	9,600.00	0.00
IAP	<b>0.00</b>	<b>5,400.00</b>	<b>5,400.00</b>
#5	0.00	5,400.00	5,400.00
Ministry Improvements	513.96	0.00	-513.96
Indirect Exp	<b>4,301.89</b>	<b>8,069.92</b>	<b>3,768.03</b>
Bank Exp	6.50	50.00	43.50
Box.com	250.00	300.00	50.00
Dues	75.00	75.00	0.00
Equipment	76.71	550.00	473.29
Fundraising Exp	<b>944.46</b>	<b>1,000.00</b>	<b>55.54</b>
BBQ & Sale	<b>767.19</b>	<b>500.00</b>	<b>-267.19</b>
Chicken	145.25	0.00	-145.25
Other BBQ & Sale	621.94	0.00	-621.94
Sleepout	177.27	500.00	322.73
Insurance	2,080.92	2,500.00	419.08
Misc	<b>0.00</b>	<b>995.00</b>	<b>995.00</b>
Other Misc	0.00	995.00	995.00
Office Supplies	336.24	200.00	-136.24
Outreach Items	0.00	500.00	500.00
PayPal Fees	151.87	99.96	-51.91
PO Box Fee	106.00	99.96	-6.04
Postage	57.22	300.00	242.78
Promotional Items	0.00	500.00	500.00
Software	0.00	700.00	700.00
Website	216.97	200.00	-16.97
<b>Ministries</b>	<b>42,020.40</b>	<b>111,318.51</b>	<b>69,298.11</b>
Catastrophic Assistance	0.00	10,000.00	10,000.00
Clearinghouse	<b>693.68</b>	<b>770.00</b>	<b>76.32</b>
Misc	0.00	50.00	50.00
Utilities-Phone	693.68	720.00	26.32
Clothes Closet	<b>1,021.45</b>	<b>1,614.97</b>	<b>593.52</b>
Maintenance	0.00	174.97	174.97
Misc	241.35	300.00	58.65
Utilities--Phone	182.03	240.00	57.97
Utilities-Electric	598.07	900.00	301.93
General Ministry	1,249.00	0.00	-1,249.00



## financial report 4

Category	1/1/2021 Actual	- Budget	12/31/2021 Difference
Helping Hands	<b>5,073.31</b>	<b>2,919.60</b>	<b>-2,153.71</b>
Maintenance	893.83	100.00	-793.83
Mileage Reimbursement	1,402.50	1,050.00	-352.50
Misc	137.81	200.00	62.19
Overflow Storage	1,200.00	0.00	-1,200.00
Utilities	<b>1,439.17</b>	<b>1,569.60</b>	<b>130.43</b>
Electric	544.60	500.00	-44.60
Phone	693.68	720.00	26.32
Propane	109.24	100.00	-9.24
Trash Disposal	91.65	150.00	58.35
Water & Sewer	0.00	99.60	99.60
Interim Assistance Program	500.00	7,500.00	7,000.00
Mobile Food Pantry	<b>82.40</b>	<b>500.00</b>	<b>417.60</b>
Food & Food Supplies	0.00	400.00	400.00
Misc	82.40	100.00	17.60
Vouchers	<b>33,400.56</b>	<b>88,013.94</b>	<b>54,613.38</b>
Covid	<b>5,908.41</b>	<b>7,013.94</b>	<b>1,105.53</b>
NY	1,340.35	4,000.00	2,659.65
PA	4,568.06	3,013.94	-1,554.12
Electricity	<b>4,703.03</b>	<b>20,000.00</b>	<b>15,296.97</b>
NY	1,800.00	5,000.00	3,200.00
PA	2,903.03	15,000.00	12,096.97
Fuel Oil	<b>3,031.87</b>	<b>14,000.00</b>	<b>10,968.13</b>
NY	932.44	4,000.00	3,067.56
PA	2,099.43	10,000.00	7,900.57
Lodging	596.23	600.00	3.77
Misc	<b>745.00</b>	<b>900.00</b>	<b>155.00</b>
Transportation	295.00	0.00	-295.00
Other Misc	450.00	0.00	-450.00
Natural Gas	<b>2,408.72</b>	<b>5,000.00</b>	<b>2,591.28</b>
NY	0.00	1,000.00	1,000.00
PA	2,408.72	4,000.00	1,591.28
Rent	<b>7,669.00</b>	<b>20,000.00</b>	<b>12,331.00</b>
NY	1,500.00	4,000.00	2,500.00
PA	6,169.00	16,000.00	9,831.00
Security Deposit	<b>5,933.00</b>	<b>16,000.00</b>	<b>10,067.00</b>
NY	1,800.00	4,000.00	2,200.00
PA	4,133.00	12,000.00	7,867.00
Sewer	<b>300.00</b>	<b>1,500.00</b>	<b>1,200.00</b>
NY	0.00	300.00	300.00
PA	300.00	1,200.00	900.00
Water	<b>2,105.30</b>	<b>3,000.00</b>	<b>894.70</b>
NY	681.54	1,200.00	518.46
PA	1,423.76	1,800.00	376.24
<b>Net Difference:</b>	<b>68,891.97</b>	<b>-24,213.45</b>	<b>93,105.42</b>

Respectfully submitted,  
**Richard Russell**, Treasurer

*Whoever gives to the poor will not want,  
but he who hides his eyes will get many a curse.  
Proverbs 28:27*

# Financial Secretary



In 2021, a total of 32 year-end receipts were distributed to individuals, organizations and businesses for gifts of \$250 or more as well as 24 receipts sent to our member churches for any amount. Along with the receipts, the insert below was included with highlights from the year along with information on how to donate using AmazonSmile. Apricot software was used to track donations and generate the year-end statements. Thank you to **Michelle Burger**, Corresponding Secretary, for sending acknowledgements through the year for donations of any amount even after moving to Tennessee in July!

Respectfully submitted,

**Kim Paul**, Financial Secretary



*Thank you* for your contribution(s) in 2021 which enabled us to help those in need in our community! Specifically, with your generous support, even in the midst of a pandemic, our volunteers were able to:

- Provide almost \$40,000 in 126 **vouchers** for basic needs including electric, fuel, rent, security deposits, water/sewer, and other emergency needs thereby helping 147 adults & 108 children.
- Serve 343 households in our **Clothes Closet** ministry giving out 8,134 free items of clothing & apparel, small housewares, books & toys.
- Assist 80 households through our **Helping Hands** ministry with furniture and appliances made possible by 341 donations.
- Provide 367 households representing 985 people with emergency food through the ministry of the **Valley Food Pantry**.
- Provide food monthly to 200 households through the **Mobile Food Pantry**.
- Serve a total of 1044 students through our **Kids at Risk** program in the school districts of Athens, Sayre, & Waverly with clothing, hygiene items, school supplies, and other needs anonymously by partnering with school personnel.
- Provide Faith & Finances a second time (a course on managing money from a Biblical perspective for lower income households).

**The Bridge of the Penn-York Valley Churches**

570-888-8826 P.O. Box 202, Sayre, PA 18840 [www.thevalleybridge.org](http://www.thevalleybridge.org)

Questions about your statement?  
Contact Kim Paul, 570-867-2628  
[financialsecretary@thevalleybridge.org](mailto:financialsecretary@thevalleybridge.org)



Looking for another way to support **The Bridge of the Penn-York Valley Churches**? Here is a quick, easy way to do so without spending a penny!

When shopping online, use AmazonSmile ([smile.amazon.com](https://smile.amazon.com)), a simple and automatic way for you to support **The Bridge** every time you shop at no cost to you. And it has all your Amazon.com history!

- Amazon donates 0.5% of the price of your eligible AmazonSmile purchases to the charitable organization of your choice.
- AmazonSmile is the same Amazon you know. Same products, same prices, same service.
- Support **The Bridge** by starting your shopping at [smile.amazon.com](https://smile.amazon.com)

Register at [smile.amazon.com](https://smile.amazon.com) and select "**The Bridge of the Penn-York Valley Churches**" as your charitable organization. It's that easy!



*Whoever is generous to the poor lends to the LORD,  
and he will repay him for his deed.  
Proverbs 19:17*

# Audit Committee



## **The Financial Audit of *The Bridge* 2021**

The Audit Committee completed a review of The Bridge's 2021 financial records, including the Main Bridge account, Kids at Risk, and Valley Food Pantry. We found the accounting records and financial reports to be accurate and proper procedures were followed in the recording-keeping process.

The committee would like to thank those involved with maintaining the financial records throughout the year – Rich Russell, Main Bridge Treasurer; Cindy Jones, Kids at Risk; Marion Dabroski, Valley Food Pantry; and Kim Paul, Financial Secretary.

Respectfully submitted,

2021 Audit Committee: Rick Felt, Bob Crocker, and Oliver McKeithan

## 2021 Leadership

### **Officers:**

President and Acting Secretary: **Kim Paul**

Treasurer: **Richard Russell**, Crossroads Family Ministries

### **Other Leadership:**

Pastoral Advisor: **Pastor Jason Burger**, Christian Life Church – January-July

Corresponding Secretary: **Michelle Burger**, Christian Life Church

Assistant Treasurer: **Marion Dabroski**, Twin Tiers Evangelical Free Presbyterian Church

Financial Secretary: **Kim Paul**

Clearinghouse Coordinator: **Judy Croft**, Crossroads Family Ministries – January-June; **Mitchell Ramsey**, July-September; **Gail Williams**, Athens Wesleyan Church – September-December

Voucher Writer Trainer: **Kim Paul**

Catastrophic and Interim Assistance Coordinators: **Oliver McKeithan**, Sayre Christian Church and **Kim Paul**

Clothes Closet Coordinator: **Kim Paul**

Helping Hands Coordinator: **Bob Ward**, Crossroads Family Ministries

Kids at Risk Coordinator: **Cindy Jones**, Athens United Methodist Church

Mobile Food Pantry, Waverly, Site Coordinator: **Kim Paul**

Facebook: **Pam Russell**, Crossroads Family Ministries

Webmaster: **Doug Paul** and **Kim Paul**

Historian: **Kim Paul**

*The Bridge of the Penn-York Valley Churches*

570-888-8826 P.O. Box 202, Sayre, PA 18840

[www.thevalleybridge.org](http://www.thevalleybridge.org)